

OREGON CORNER RESTORATION FORM

Section: 31
 Township: 3 North
 Range: 33 East of the Willamette Meridian
 County: Umatilla
 Date: 05/13/02

Corner Indexing Information: Township 3N Range 33E Corner Code Z-1 (Willamette Meridian)

Additional Identifier: (e.g. BLM designation for the corner, street intersection, plat name, block, lot, etc.)

Southwest corner Section 31.

Oregon Plane Coordinates: N: 742158.846 E: 8650439.550

Zone: North **Order:** second **Datum:** NAD83-91 **Convergence:** 1°14'39.5" **Scale Factor:** 0.99987674

Previous Renewals/Surveys, etc.:

Corner was originally set by Thompson in 1864 as a post mound and pits, per contract no. 106.

In 1988 Wells shows that he found a 2 1/2" brass cap on 1 1/2" pipe (C.S. 88-19-C).

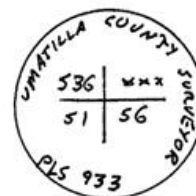
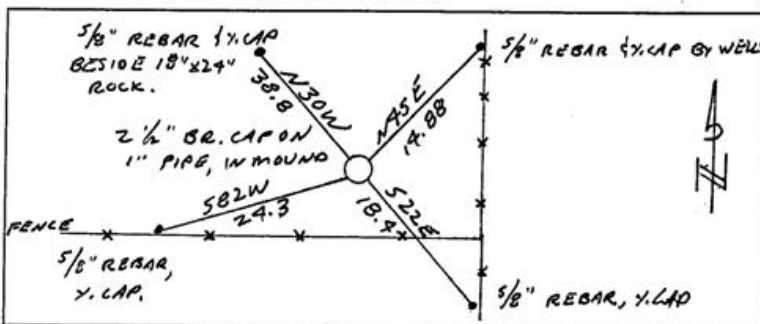
In 2001, Haddock finds a brass cap set by PLS 933 (C.S. 01-81-C)

Monument(s) & Accessories Found (Condition & Source):

Found a 2 1/2" brass cap on a 1" pipe protruding 20". A 5/8" rebar with yellow cap by Wells, post, and sign bears N45°E 14.88".

Monument Set (Procedures & Description):

Monument Detail:



Location & Comments:

Compass Declination:

19° East

Surveyor's Seal

Firm/Agency: Tomkins Land Surveying, Inc.
 20 E. Poplar, Suite 204
 Walla Walla WA 99362

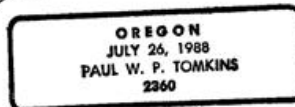


Paul W. P. Tomkins

Party Chief: PWPT

Notes:

Witness:



renews 6/30/04

2/11/03

RECEIVED BY
 Umatilla County Surveyor
 Date 2-03
 Rec'd By KK
 No. 03-25-a