

G-17

OREGON CORNER RESTORATION FORM

Section 11 Township 2N Range 33E

County Umatilla Date August 25, 1988

G-17

CORNER DESIGNATION

1/4 Corner common to Sections 10 and 11.

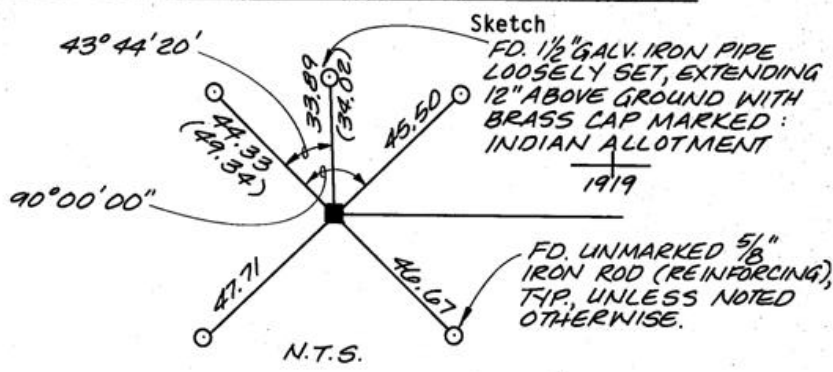
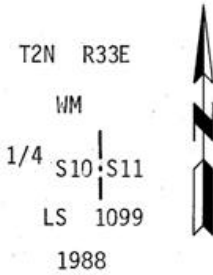
- Condition Report Only
- Not Found
- Renewed
- Unrecorded
- Surveyed In
- Referenced Out

Previous Renewals/Surveys, etc. Surveys H-227C, I-170A, L-49C, 82-GOB, 82-73Ax, 82-85Ax, 83-176B, 86-4B, and others.

Monument(s) & Accessories Found: (Condition and Source)

Refer to survey filed during September, 1988 for EDT Construction. ANDERSON.PERRY & ASSOCIATES, INC. was not present to witness the condition of the existing monument and did not participate in its referencing prior to the removal of the monument during road construction activities. The corner accessories found, as described hereon, were placed by Whiteshield, Inc. during March, 1988.

Monument Detail



Monument Set (Procedures and Description)

Set a 5/8" x 30" iron reinforcing rod, 0.7 ft. below the roadway surface, beneath an aluminum monument cover, with aluminum cap attached. Marked as shown in the monument detail above.

New Accessories

None established in addition to those shown in the sketch above.

Location & Comments

Located near the Center-line of Short Mile Road (Co. Road #908), approx. 150' E. of its intersection of Co. Road #900.

Compass Declination 20° E
 Firm/Agency ANDERSON.
 PERRY & ASSOCIATES, INC.
 Address P.O. Box 1107
 La Grande, OR 97850

Surveyor's Seal



RECEIVED BY
 Umatilla County Surveyor
 Date 12-88
 Rec'd by KA
 No. 88-87-C

Party Chief Edwin Stryker
 Notes
 Witness Steven J. Anderson