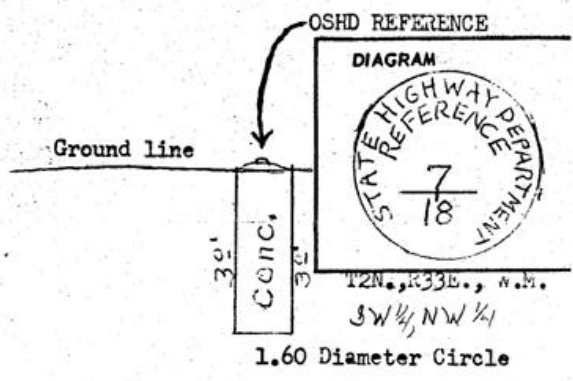


CERTIFIED RECORD OF LAND CORNER MONUMENT, OREGON

SET BY STATE HIGHWAY

History of original corner establishment:

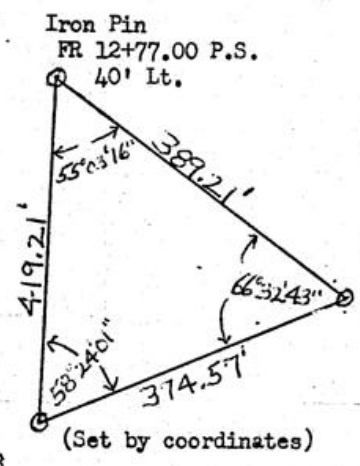
Refer to survey by Z. F. Moody cont. No. 145 April 23, 1871. Also see survey by Currin & Noland by contract May 4, 1887.



Description of corner evidence found:

5/8" X 30" Iron Pin

Description of monument and accessories I established to perpetuate the original location of this corner



1/4 Cor. Sec. 7 & 18 T2N., R33E., W.M.

Office of... COUNTY SURVEYOR... County of... UMATILLA...
 State of... OREGON... I hereby certify that the within instrument was filed in this office
 for record on the 30 day of MARCH... 1970, at... o'clock... m., (signed)
Ralph Thompson by _____
 (COUNTY OFFICIAL) (DEPUTY)