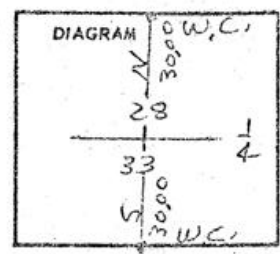


CERTIFIED RECORD OF LAND CORNER MONUMENTATION

Restoration of S. 1/4 Cor Sec 28, T2N, R33 E, W.M.

History of original corner establishment:

Original Survey by Moody in 1871
Retracement by Currin & Noland in 1887
Both set posts or charred stakes
and since been lost.
Retracement by Indian Affairs in 1917
and they set brass cap.

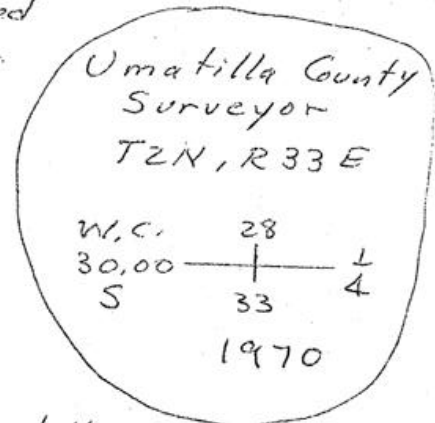
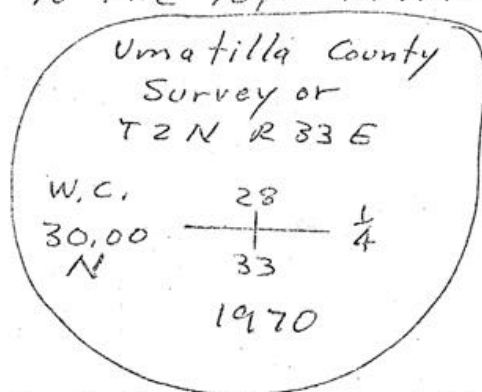


V-11

Description of corner evidence found: No evidence found except
fence line.

Description of monument and accessories I established to perpetuate the
original location of this corner

For the cor. I only set a
temporary 60 penny spike in center of graveled
County Road. I set 2 witness corners.
1" x 36" Galv. pipe with 2 1/2" brass cap securely
fastened to the top marked



Office of The County Surveyor of County of Umatilla
State of Ore, I hereby certify that the within instrument was filed in this office
for record on the 27 day of Sept; 1970, at o'clock m., (signed)
Edward L. Sturgeon by
(COUNTY OFFICIAL) (DEPUTY)

