

OREGON CORNER RESTORATION FORM

Section 1 Township 2N Range 34E, W.M.

E-23

County Umatilla Date May 19, 1995

CORNER DESIGNATION: $\frac{1}{4}$ Corner between Section 1 of T2N, R34E, W.M. and Section 6 of T2N, R35E, W.M.

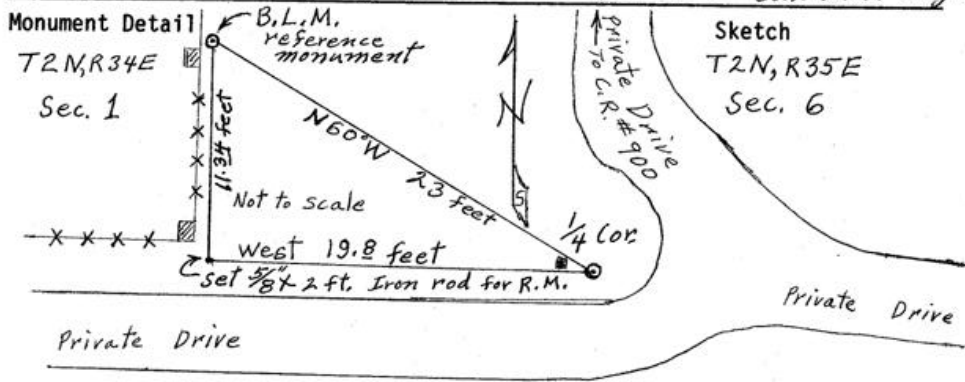
Condition Report Only
 Not Found
 Renewed
 Unrecorded
 Surveyed In
 Referenced Out

Previous Renewals/Surveys, etc. Bureau of Land Management R-652

Page 181 Dependent Resurvey of west boundary of section 6, T2N, R35E, W.M. Richard L. Johnson, 2454LS

Monument(s) & Accessories Found: (Condition and Source)

Found $1\frac{7}{8}$ inch pipe with $2\frac{3}{8}$ inch brass cap marked $\frac{1}{4}$ S.1 T2N R34E and $\frac{1}{4}$ S 6 T2N R35E INDIAN ALLOTMENT Monument set by C.E. Redfield. B.L.M. reference monument a $3\frac{1}{8}$ inch brass cap on $2\frac{1}{2}$ inch steel pipe or post with arrow pointing to $\frac{1}{4}$ corner, bears N60W 23 feet from $\frac{1}{4}$ corner. The B.L.M. reference monument is about one foot east of N-S fence line and approx. 11 feet north of fence corner. Set by R.L. Johnson, 2454LS Condition is good.



Monument Set (Procedures and Description)

New Accessories

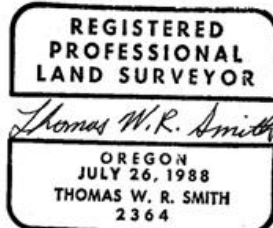
Set $\frac{5}{8}$ inch by 2 feet iron rod west of $\frac{1}{4}$ corner 19.8 feet 3 inches below the ground. Fence corner bears N60W 14 inches from iron rod.

Location & Comments

$\frac{1}{4}$ corner located south of county road #900 (also known as Cayuse Rd.) approx 710±10 feet from mile post 13.8 at "T" intersection of Private drives.

Compass Declination 20° East
 Firm/Agency _____
 Thomas W.R. Smith, PLS
 Address 51690 Cayuse Rd. Adams, Oregon 97810
 Party Chief T.W.R. Smith
 Notes T.W.R. Smith
 Witness Dwight M. Bartleson, PLS

Surveyor's Seal



Renewal date 6/30/96

RECEIVED BY
 Umatilla County Surveyor
 Date 6-9-95
 Rec'd By AK
 No. 95-106-R