

OREGON CORNER RESTORATION FORM

Section 27 Township 2S Range 32E
 County Umatilla Date: March 28, 2007

Corner Designation: 2S32R17

Corner to sections 22, 23, 26, and 27, T2S, R32E,
 W.M., Umatilla County, Oregon.

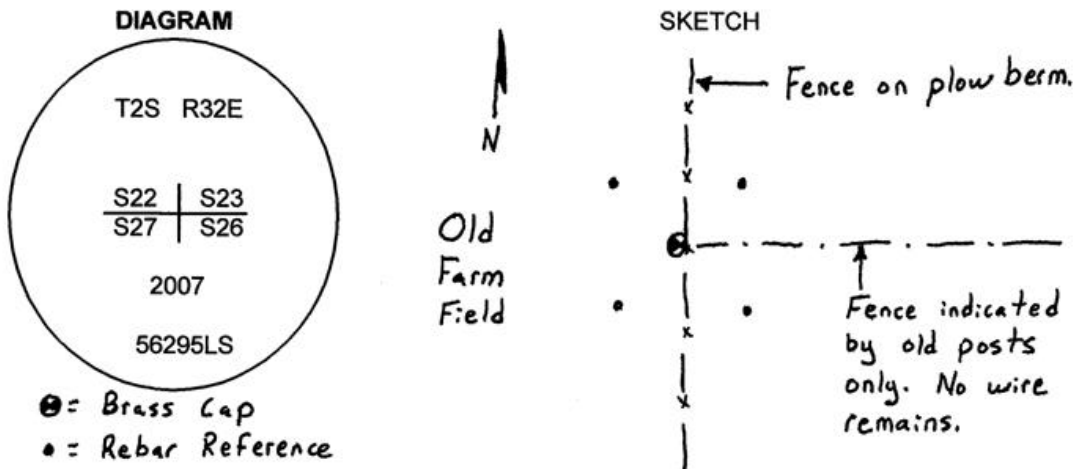
Condition Report Only
 Not found
 Remonumented
 Unrecorded
 Surveyed in
 Referenced out

Previous Renewals / Surveys, etc.

Corner originally set by Daniel Chaplin under contract No. 107 dated September 21, 1864. His record reads: Set stone, 20x10x8 for cor. to secs. 22, 23, 26 & 27. This corner was re-established by John Arnold in his completion survey under contract No. 551 dated March 19, 1890. His record reads: Finding no traces of any former corner., I set, at this point a granite boulder, 8 x 8 x 8 ins., 6 ins. in ground, for Cor. to Secs. 22, 23, 26 & 27, marked 2 notches on S. and 2 notches on E. face; dug pits, 18 x 18 x 12 ins. in each Sec., 5 1/2 ft. dist., and raised mound of stone and earth, 2 ft. high by 4 1/2 ft. base over Cor. on W. hillside.

Monument and Accessories found: (condition and source)

The stone by Arnold loose in a small pile of stones at a three way fence intersection with the remains of fences running east, north and south. The fences are on top of a north - south plow line. The granite stone was badly decayed but had 2 notches visible.



MONUMENT (S) AND ACCESSORIES SET (Procedures and Description)

I set a 1 1/2" x 30" galvanized iron pipe with a 2 1/4" brass cap stamped as shown in the diagram above at the position of the original stone. I buried the stone along side and placed a collar of stone around the monument.

For references, I set four, 5/8" by 24" rebars with 1 1/8" orange plastic caps attached, stamped WTS and 56295LS as described below:

- an iron rebar bears N47°58'54"E, 50.19 feet;
- an iron rebar bears N43°23'30"W, 53.17 feet;
- an iron rebar bears S47°01'36"E, 49.51 feet;
- an iron rebar bears S40°05'18"W, 47.24 feet;

The monument and references were tied using a Trimble R7/R8 RTK GPS.

Location and comments

Compass Declination

Surveyors Seal

RECEIVED BY:
Umatilla County Surveyor
 Date: 6-07
 Rec'd By: KK
 No. 07-169-C

Firm / Agency
 Witness Tree Surveying
 Address
 P.O. Box G
 Pilot Rock, Or. 97868
 Party Chief
 Stephen K, Haddock

REGISTERED
 PROFESSIONAL
 LAND SURVEYOR

Stephen K. Haddock

OREGON
 JULY 9, 2001
 STEPHEN K. HADDOCK
 56295LS

RENEWAL DATE 6-30-07