

OREGON CORNER RESTORATION FORM

Section 19 Township 2S Range 34E
 County Umatilla Date: April 21, 2000

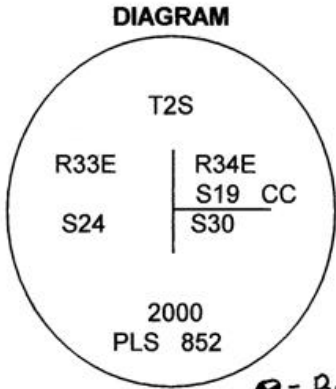
Corner Designation: 2S34R1

Closing corner to sections 19 and 30, T2S, R34E,
 W.M., Umatilla County, Oregon.

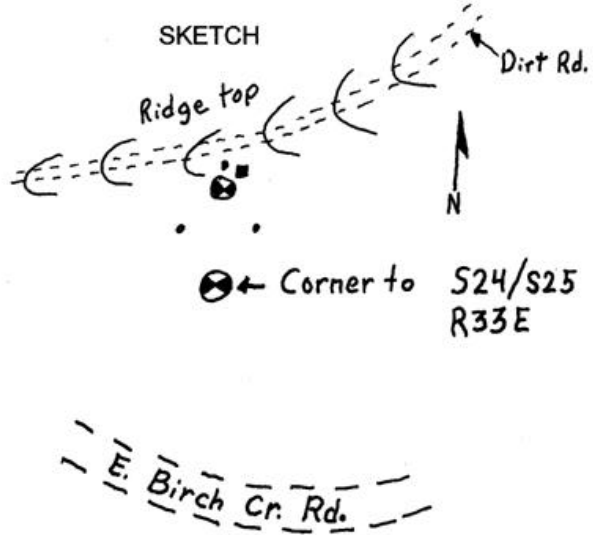
Condition Report Only
 Not found
 Remonumented
 Unrecorded
 Surveyed in
 Referenced out

Previous Renewals / Surveys, etc.
 Corner originally set by James P. Currin and James E. Noland under special contract dated May 4, 1887. Their record reads: Set stone, 7 x 9 x 12 ins., 8 ins. in ground for closing corner to sections 19 and 30 marked URCC on E. face, with 4 notches on N. and 2 on S. edges. around which I erected mound of stone, 2 ft. high with 4 1/2 foot base.

Monument and Accessories found: (condition and source)
 The original stone, clearly marked CC in a mound of stone.



⊗ = Brass cap
 ■ = Guard post
 • = Refe



MONUMENT (S) AND ACCESSORIES SET (Procedures and Description)
 Set a 1 1/4" x 30" Galvanized Iron Pipe with a 2 1/2" brass cap stamped as shown in the diagram above in the original mound. Buried the stone along side. Set a 6' steel post with a county monument sign attached along side.

For references, I set three 5/8" by 24" rebars with 1.25" red plastic caps stamped ORLS 852 and WALS 13922 as described below and also the monument for the standard corner to sections 24 and 25, range 33E.
 an iron rebar bears N05°49'16"E, 44.52 feet;
 an iron rebar bears S20°08'56"E, 174.37 feet;
 an iron rebar bears S17°55'36"W, 152.00 feet;
 the standard corner bears S00°39'33"E, 246.33 feet;

The monument and references were tied using a LIECA system 300 RTK GPS.

Location and comments

Compass Declination

Surveyors Seal

RECEIVED BY:
 Umatilla County Surveyor
 Date: 7-00
 Rec'd By: KE
 No. 00-156-C

Firm / Agency
 Haddock Surveying
 Address
 P.O. Box 1574
 Pendleton, Or. 97801
 Party Chief
 Stephen K, Haddock

