

U. S. DEPARTMENT OF AGRICULTURE  
FOREST SERVICE

Umatilla NATIONAL FOREST

CORNERS OF THE PUBLIC SURVEY

T. 1A R. 37E N Mer.

Section Corner common to Sections

32, 33, 4, and 5

Corner consists of a Mound of Rocks (not) with Post in place

State condition Good

Dimensions above ground 18 inches.  
Sketch grooves, letters, figures, or notches, on proper face or edge.

CARDINAL POSITION

DIAGONAL POSITION

N	W	S	E

15	S	25	R37E
S32	5	S4	S33
NW	SW	SE	NE

Mound of \_\_\_\_\_ is located \_\_\_\_\_

Pits are located \_\_\_\_\_

Sketch markings of Bearing Trees (or Rocks) in proper box and fill blanks below, giving bearings from Corner to Trees and Distances in Links.

	<u>Obiterated</u>		
	<u>BT</u>		

Species Y.P. Stump

Diameter 26"

Bearing S33W

Distance 75 lbs

Do you believe this to be a genuine Land Office Corner? Yes

If not, why? \_\_\_\_\_

J. D. Monroe  
Signature

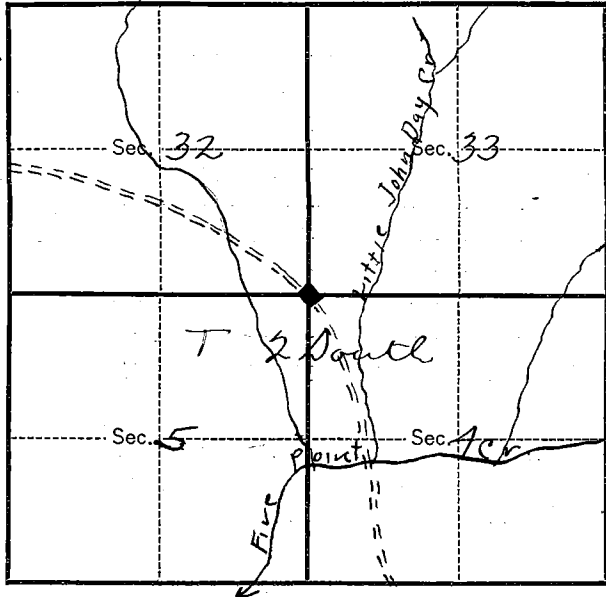
July 6, 1928  
Date.

J. J.  
Title.

T. 18 R. 37E 22 Mer.

8-3027

(Make sketch of topography near Corner.)



Metal Location Poster is on a 2 y.p  
tree 10 inches diameter, on the SW  
side of the tree  
from which this Corner bears S 40° 30' W  
40 links chains distant.

Give any further facts which will aid in finding this  
Corner again.

The corner is on  
the old road crossing  
5-Pt. Creek and coming  
out on Five Prairie  
The corner is a little  
over a quarter of a  
mile north of the  
Five Point Creek crossing.

Form 874-9—Revised May, 1918

U. S. Department of Agriculture

FOREST SERVICE

Umatilla NATIONAL FOREST

CORNERS OF THE PUBLIC SURVEY

T. 1 & 2 S. R. 37 E. W. Mer.

Section 4, 5, 32, and 33

Corner consists of a stake (not) in place

State condition rotted & split

Dimensions above ground 22" inches.

Sketch grooves, letters, figures, or notches, on proper face or edge.

CARDINAL POSITION

DIAGONAL POSITION

N	W	S	E

T1S R37E S32	T2S R37E S5	T2S R37E S4	T1S R37E S33
NW	SW	SE	NE

Mound of is located

Pits are located

Sketch markings of Bearing Trees (or Rocks) in proper box and fill blanks below, giving bearings from Corner to Trees and Distances in Links.

CS	CS	CS	CS

Species	YP	YP	YP	YP
Diameter	12'	12'	11'	10 1/2'
Bearing	N70W	S18W	S38E	N43E
Distance	16'	13 1/2'	16'	17'

Do you believe this to be a genuine Land Office Corner? Yes

If not, why?

Vance L. Morrison

(Signature)

Protective Assistant

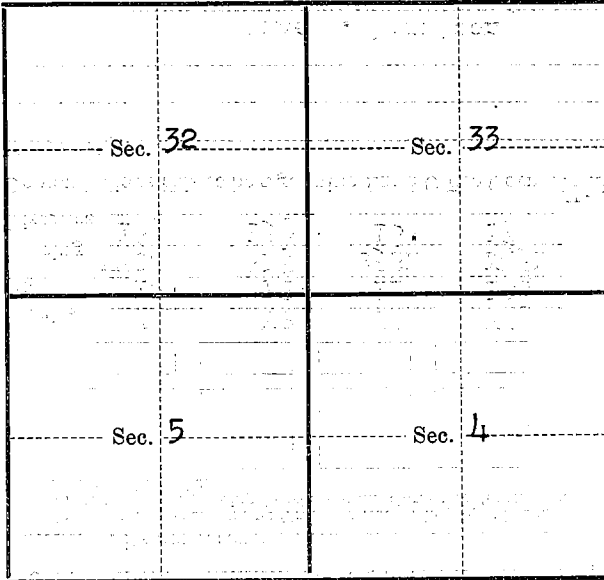
10/27/33

(Date)

(Title)

T. 1 & 2 S. R. 37 E. W. Mer.

(Make sketch of topography near Corner)



Metal Location Poster is on a YP bearing tree  
tree  $12\frac{1}{2}$  inches diameter, on the East  
side of tree  
from which this Corner bears N  $72^{\circ}$  E  
 $13\frac{1}{2}$  chains distant.

Give any further facts which will aid in finding this  
Corner again.

about 35 E of old road on ridge above  
and W of Little John Day Creek

Form 874-9—Revised May, 1918

U. S. Department of Agriculture

FOREST SERVICE

Umotille NATIONAL FOREST

CORNERS OF THE PUBLIC SURVEY

T. ~~42S~~ R. 37E W Mer.

Section Corner common to Sections 4, 5, 32, and 33

Corner consists of a STAKE (not) in place State condition rotted + split

Dimensions above ground 2.2 inches.

Sketch grooves, letters, figures, or notches, on proper face or edge.

CARDINAL POSITION

DIAGONAL POSITION

N	W	S	E

T1S R37E 532	T2S R37E 55	T2S R37E 54	T1S R37E 533
NW	SW	SE	NE

Mound of \_\_\_\_\_ is located \_\_\_\_\_

Pits are located \_\_\_\_\_

Sketch markings of Bearing Trees (or Rocks) in proper box and fill blanks below, giving bearings from Corner to Trees and Distances in Links.

CS	CS	CS	CS

Species YP YP YP YP  
 Diameter 12' 12 1/2 11 10 1/2  
 Bearing N70W S18W S88E N43E  
 Distance 16' 13 1/2 19' 17'

Do you believe this to be a genuine Land Office Corner? Yes

If not, why? \_\_\_\_\_

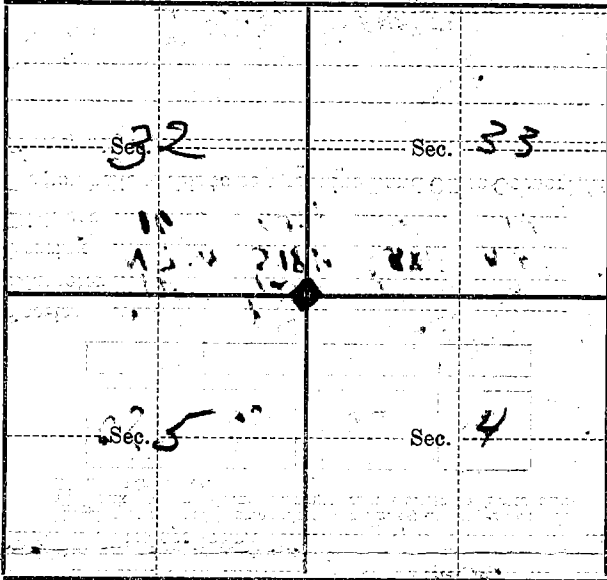
Vance J. Morrison (Signature)

10-27-33 (Date)

Assistant Asst. (Title)

T. 142S R. 37E W Mer.

(Make sketch of topography near Corner)



Metal Location Poster is on a *Y.P. Banning* tree  $18\frac{1}{2}$  inches diameter, on the *East* side of *tree*

from which this Corner bears *N 72° E*  $13\frac{1}{2}$ ' chains distant.

Give any further facts which will aid in finding this Corner again.

*About 35 E of old road on Ridge  
about 1/2 W of 1st John Day Cr.*

USDA-FOREST SERVICE

Index File No. Z-9

CORNER RECORD (SEARCH)

(Ref. FSM 7151.4)

Tract or Survey No. \_\_\_\_\_ Cor. No. \_\_\_\_\_

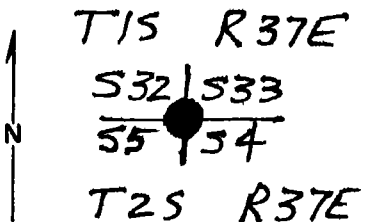
T 1S R. 37E

R.D. LA GRANDE County UNION

Merid. WILL

N.F. WALLOMA-WHITMAN State OREGON

CORNER DIAGRAM



DESCRIBE CORNER MONUMENT FOUND

MOUND OF STONES

DESCRIBE BEARING TREES OR OTHER OFFICIAL ACCESSORIES FOUND

STUMP HOLE N43°E, 9.9 ft.

STUMP HOLE N27°W, 59.4 ft.

STUMP HOLE S35°W, 41.6 ft.

PHOTO IDENTIFICATION DATA

Photo No. \_\_\_\_\_

Filed At. \_\_\_\_\_

Object Ident. \_\_\_\_\_

Ident. By \_\_\_\_\_

*Signature* \_\_\_\_\_

DESCRIBE CORNER LOCATION RELATIVE TO NEAR-BY FEATURES, ALSO HOW TO REACH CORNER

PLANE COORDINATE POSITION DATA

State \_\_\_\_\_ Zone \_\_\_\_\_

X \_\_\_\_\_

Y \_\_\_\_\_

Estab. By \_\_\_\_\_

*Agency* \_\_\_\_\_

*Dennis L. Layford* Signature Title LS 1636 Division Headquarters Date 6-7-88

CORNER RECORD (PERPETUATION)

MONUMENT: DESCRIBE NEW MONUMENT SET, OR WORK DONE TO PRESERVE EXISTING MONUMENT

SET 2 1/2" x 30" ALUM PIPE W/ ALUM. CAP IN CENTER OF STONE MOUND. CAP IS MARKED:

R  
T  
S  
E  
T 15  
372 533  
551 54  
T 25  
25 16 36  
1988

ACCESSORIES: DESCRIBE NEW BT'S WITNESS OBJECTS ETC. ESTABLISHED, OR WORK DONE TO PRESERVE EXISTING EVIDENCE

24" POND PINE N 88° E, 110.9 FT. SCRIBED "T 15 R 37E S 33 BT"  
18" POND. PINE S 11° E, 185.4 FT. SCRIBED "T 15 R 37E S 4 BT"

Work Done By Daniel P. Gayland L.S.

Date 6-7-88 State Registration No. ORE 65 1636  
or Agency

Certified Cor. Record Prepared?  Yes  No

Filed At: UNION & UMATILLA CO.

Date 6-7-88

REMARKS

Index File No.

2-9

T.

15

R.

37E

M.

WILLI

Tract or Surv. No.

Cor.