

**OREGON CORNER RESTORATION FORM**

Section 2 Township 3N Range 27E  
 County Umatilla Date 06-29-02  
 Corner Designation: 3N27E24

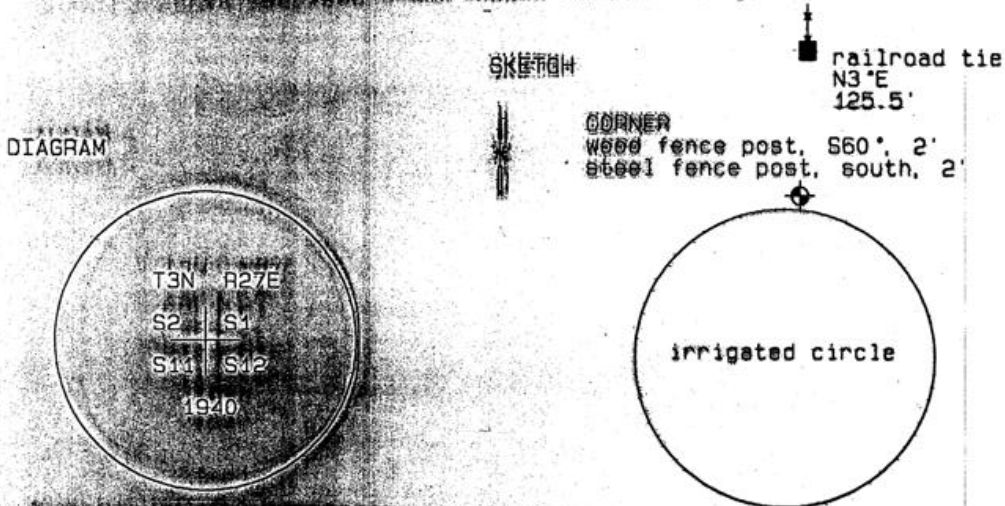
Condition Report Only  
 Not Found  
 Remonumented  
 Unrecorded  
 Surveyed In  
 Referenced Out

Previous Renewals / Surveys, etc.

Survey 90-49-B records finding a 1940 GLO brass cap at this corner.  
 Survey 95-54-B records finding a 1940 GLO brass cap at this corner.

Monument and Accessories Found: (condition and source)

Found the above described brass capped monument in good condition.



MONUMENT (S) AND ACCESSORIES SET (Procedures and Description)

None.

REFERENCES SET

None.

Made GPS tie to JRT Station  
 Stanfield East Base  
 Latitude 45 45 48.46602N  
 Longitude 119 23 35.66202W  
 NAD 83 (1991)

Oregon State Plane Coord. - North Zone  
 Northing 766185.65  
 Easting 8484533.26  
 Ortho Height 667.49  
 Ellipsoidal Height 597.61

Location and Comments

Compass Declination  
20°E

Surveyors Seal

From the junction of 162 and Westway Road, go south on Col Jordan Road 1.4 mile. Then take the Madison Farm road southerly for 0.8 mile, and then go south for 0.9 mile. Then go along the north edge of a circle 0.3 mile to the corner.

REGISTERED  
 PROFESSIONAL  
 LAND SURVEYOR

RECEIVED BY:

Firm / Agency

*David L. Haddock*

Date: 02-02  
 Rec'd By: [Signature]  
 No.: 02-282-0

Haddock Surveying  
 P. O. Box 1574  
 Pendleton, OR 97801  
 (541) 278-2174

OREGON  
 JULY 12, 1968  
 DAVID L. HADDOCK  
 852

RENEWS 6-30-03