

**OREGON CORNER RESTORATION FORM**

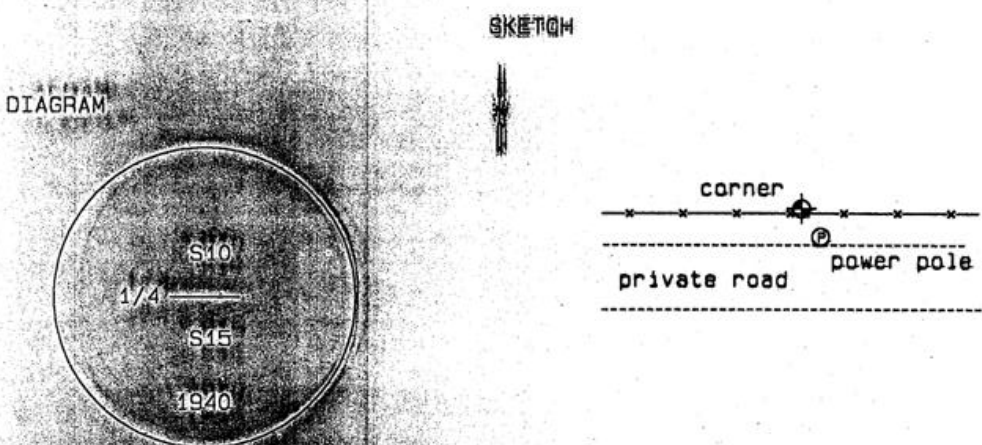
Section 10 Township 3N Range 27E  
 County Umatilla Date 07-18-02

Corner Designation: 8N27J45

Condition Report Only  
 Not Found  
 Remonumented  
 Unrecorded  
 Surveyed In  
 Referenced Out

Previous Renewals / Surveys, etc.  
 Corner set by GLO in 1940.

Monument and Accessories Found: (condition and source)  
 Found standard GLO brass cap on 1" iron pipe in north south fence line.  
 Corner is bent at a point about 12" below surface. Shot at apparent center of lower part of pipe.



**MONUMENT (S) AND ACCESSORIES SET (Procedures and Description)**

None.

**REFERENCES SET:**

None.  
 Made GPS tie to T&E Station  
 Stanfield East Base  
 Latitude 45 44 59.872095N  
 Longitude 119 25 27.470692W  
 NAD 83 (1994)  
 Oregon State Plane Coord. - North Zone  
 Northing 760749.30  
 Easting 8476697.77  
 Ortho Height 753.89  
 Ellipsoidal Height 684.05

**Location and Comments**      **Compass Declination**      **Surveyors Seal**

From the junction of 184 and Westland Road, go 20° E south on Jordan Road 1.4 miles. Then take the Madison Farm Road south 0.7 mile, west 0.4 mile, southwest 2.2 mile to a pumping station. Then go west 0.5 mile to the corner.

REGISTERED  
 PROFESSIONAL  
 LAND SURVEYOR

**RECEIVED BY:**

**Firm / Agency**

Date: 12-02  
 Rec'd By: [Signature]  
 No: 02-28249

Haddock Surveying  
 P. O. Box 1874  
 Pendleton, OR 97801  
 (541) 278-2174

DAVID L. HADDOCK  
 OREGON  
 JULY 12, 1968  
 852