

OREGON CORNER RESTORATION FORM

Section 44 Township 31N Range 27E
 County Umatilla Date 06-30-02
 Corner Designation: 3N27J17

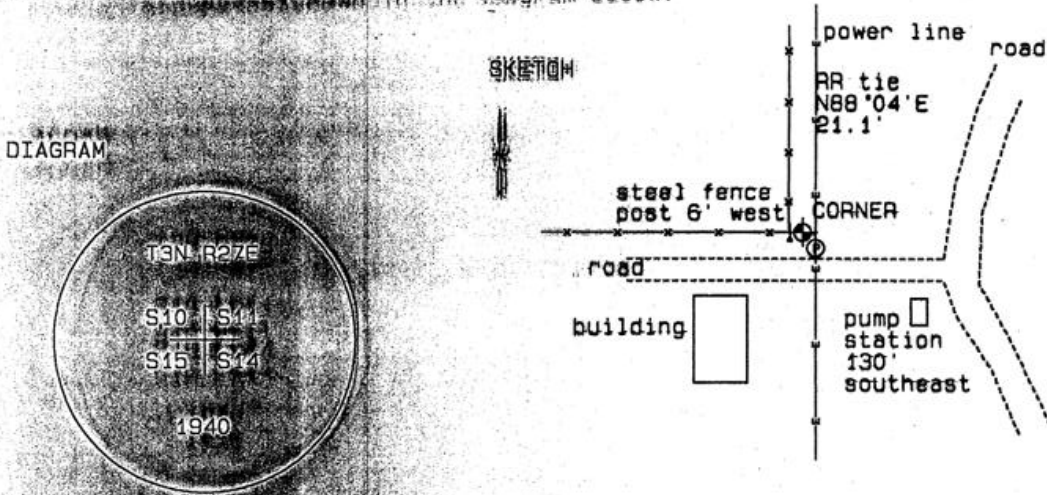
Condition Report Only
 Not Found
 Remonumented
 Unrecorded
 Surveyed In
 Referenced Out

Previous Renewals / Surveys, etc.

Corner set by GLO in 1940.
 Survey 99-49-B reports finding this monument.

Monument and Accessories Found: (condition and source)

Found the second monument in good condition 24 inches below the surface, stamped as shown in the diagram below.



MONUMENT (S) AND ACCESSORIES SET (Procedures and Description)

None

REFERENCES SET

None

Made GPS tie to TRM Station
 Stanfield East Base
 Latitude: 45 24 54.20618N
 Longitude: 119 24 50.08870W
 NAD 83 (1991)

Oregon State Plane Coord. - North Zone
 Northing 760818.60
 Easting 8479347.90
 Ortho Height 740.76
 Ellipsoidal Height 670.93

Location and Comments Compass Direction 20°E Surveyors Seal

From the junction of 25th and Westland Road, follow Jordan Road south 1.4 miles, enter the posted Madison Farm Road and continue south 0.7 mile. Then follow a circular road south westerly 2.6 miles to a pumping station easily visible on the hill.

RECEIVED BY:

Date: 12-01-02
 Rec'd By: [Signature]
 No: 02-282-01

Firm / Agency

Haddock Surveying
 P.O. Box 1874
 Pendleton, OR 97801
 (541) 276-2174

REGISTERED
 PROFESSIONAL
 LAND SURVEYOR

David L. Haddock

OREGON
 JULY 12, 1968
 DAVID L. HADDOCK
 052