

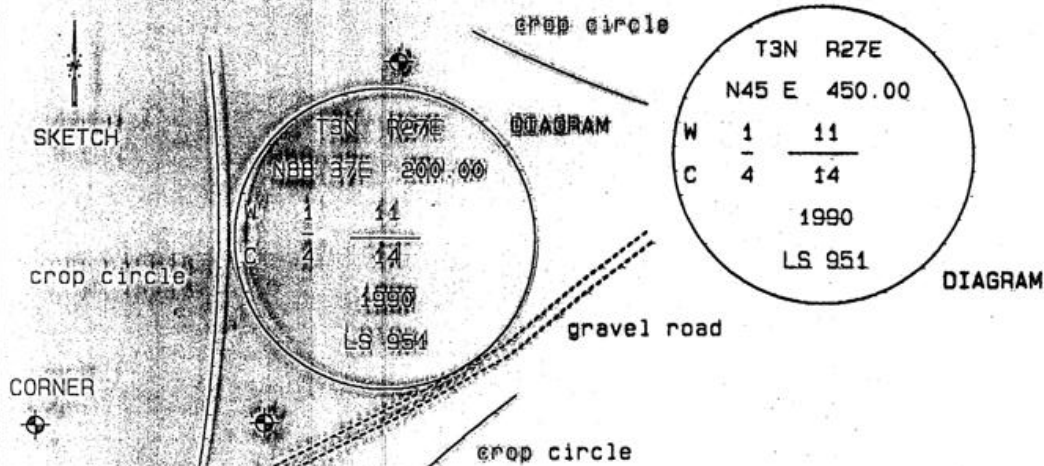
OREGON CORNER RESTORATION FORM

Section 11 Township 3N Range 27E
 County Umatilla Date 06-30-02
 Corner Designation: 3N27E19

Condition Report Only
 Not Found
 Remonumented
 Unrecorded
 Surveyed In
 Referenced Out

Previous Renewals / Surveys, etc.
 Survey 90-49-B found a 1940 GLO brass cap here.

Monument and Accessories Found: (condition and source)
 Found the brass cap witness corners in good condition.
 Computed the state plane coordinates from these two witness corners.



MONUMENT (S) AND ACCESSORIES SET (Procedures and Description)

None

REFERENCES SET

None

Made GPS tie to TRI Station Stanfield East Base
 Latitude 45 44 57.70507 N
 Longitude 119 24 08.30755 W
 NAD 83 (1991)

Oregon State Plane Coord. - North Zone
 Northing 761212.60
 Easting 8482305.58
 Ortho Height 690.28
 Ellipsoidal Height 620.46

Location and Comments: Compass Declination 20°E

Surveyors Seal

From the junction of 184 and Westland Road, follow Jordan Road south 1.1 mile. Enter the posted Madison Farm Road and continue south 0.7 mile. Then follow circle roads south westerly 2.6 miles.

REGISTERED
 PROFESSIONAL
 LAND SURVEYOR

David L. Haddock

OREGON
 JULY 12, 1968
 DAVID L. HADDOCK
 852

RECEIVED BY:

Firm / Agency

Date: 12-02
 Rec'd By: KK
 No. 02-252-9

Haddock Surveying
 P. O. Box 1874
 Pendleton, OR 97801
 (541) 278-2174

RENEWS 6-30-03