

OREGON CORNER RESTORATION FORM

Section 43 Township 3N Range 27E
 County Umatilla Date 06-27-02

Corner Designation: 3N27E25

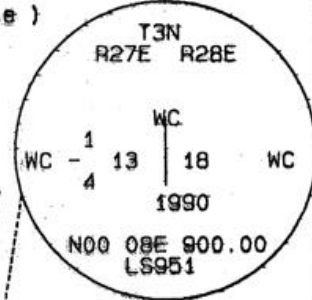
Condition Report Only
 Not Found
 Remonumented
 Unrecorded
 Surveyed In
 Referenced Out

Previous Renewals / Surveys, etc.

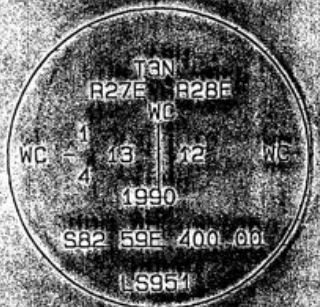
Gould reports setting a GLO brass capped monument here in 1940.
 Survey 90-49-B reports setting brass capped witness monuments here.

Monument and Accessories Found: (condition and source)

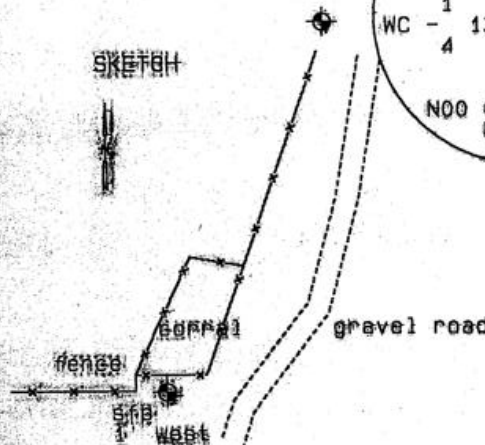
Found both brass capped witness monuments in good condition. Computed corner coordinates based on ties to witness monuments from survey 90-49-B.



DIAGRAM



SKETCH



MONUMENT (S) AND ACCESSORIES SET (Procedures and Description)

None.

REFERENCES SET

None.

Made GPS tie to T&M Station Stanfield East Base
 Latitude 45 44 25 10921 N
 Longitude 119 22 20 87119 W
 NAD 83 (1994)

Oregon State Plane Coord. - North Zone
 Northing 758320.33
 Easting 8489964.99
 Ortho Height
 Ellipsoidal Height

Location and Comments

Compass Declination 20.1E

Surveyors Seal

From the junction of 184 and Westland Road, go south on Jordan Road 1.4 miles. Then take Madison Farm Road south 2.6 mi. to corner.

REGISTERED PROFESSIONAL LAND SURVEYOR

RECEIVED BY:

Farm / Agency

David L. Haddock

Date: 12-02
 Rec'd By: KK
 No: 02-182-9

Haddock Surveying
 P. O. Box 1574
 Bendleton, OR 97601
 (541) 876-2174

OREGON
 JULY 12, 1968
 DAVID L. HADDOCK
 852

RENEWS 6-30-03