

OREGON CORNER RESTORATION FORM

COUNTY: Umatilla. DATE: 04/19/23.

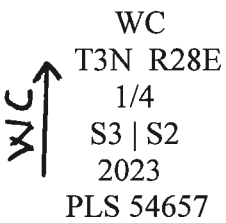
CORNER DESIGNATION: C-17, the East Quarter Corner of Section 3, Township 3 North, Range 28 East, W.M.

PREVIOUS RENEWALS/SURVEYS ETC: Corner was originally established by N.H. Gates under Contract No. 84, dated July 22, 1859. Gates set a post in earth mound. Survey Number 258, surveyed the line between Sections 2 and 3 in 1907 and reestablished the corner and set a 18"X12"X8" stone for the corner.

MONUMENT AND ACCESSORIES FOUND: None. The corner point now falls in an irrigation canal.

I computed the corner point by single proportion measure using the record from Survey No. 258, (1907). Kimbrell's record distance from survey No. 258 is much longer than GLO record closing on the Township Line.

MONUMENT MARKING DETAIL:



WITNESS CORNER MONUMENT SET:

At a point S 00°43'50" W, 300.00', (grid distance), from the computed corner point, set a witness corner monument, a 2 1/2" brass cap on 1 1/4" by 30" galvanized iron pipe 30" in the ground. The brass cap is marked as shown in the Monument Marking Detail. Set a steel fence post 1' East of the witness corner monument and attached Witness post sign.

New accessories to the witness corner monument:

- A 5/8"X24" rebar with blue plastic cap marked "Wells Surveying 54657PLS" bears N 53°31'23" E, 52.91'. Wired bearing object sign to the rebar. Rebar is in a scab, unfarmed area..
- A 5/8"X24" rebar with blue plastic cap marked "Wells Surveying 54657PLS" bears S 43°30'56" E, 47.90'. Wired bearing object sign to the rebar.
- A 5/8"X24" rebar with blue plastic cap marked "Wells Surveying 54657PLS" bears S 55°21'30" W, 50.53'. Wired bearing object sign to the rebar. Set steel fence post 1' East of rebar with witness sign facing canal road.
- A 5/8"X24" rebar with blue plastic cap marked "Wells Surveying 54657PLS" bears N 14°29'12" W, 42.35', in N-S fence line. Wired bearing object sign to the rebar.

Courses to corner accessories are State Plane Grid bearings and distances.

LOCATION AND COMMENTS: Witness corner monument is approximately 10' East of a N-S field fence.

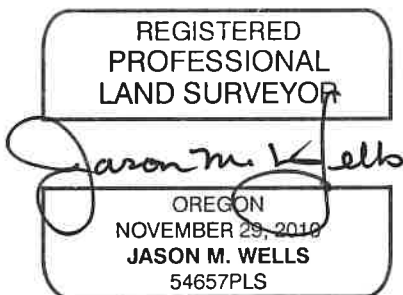
OREGON STATE PLANE COORDINATE, North Zone NAD 83(91), International Feet Units:

N: 768948.69
E: 8510801.70

FIRM: Wells Surveying
P.O. Box 1696
Pendleton, OR 97801

Surveyor's Seal

\3N28C-17



RENEWS: 6!30!24

24-004-C