

# OREGON CORNER RESTORATION FORM

Section 16 Township 3N Range 28E  
 County Umatilla Date: 06-20-02

Corner Designation: 3N28N13

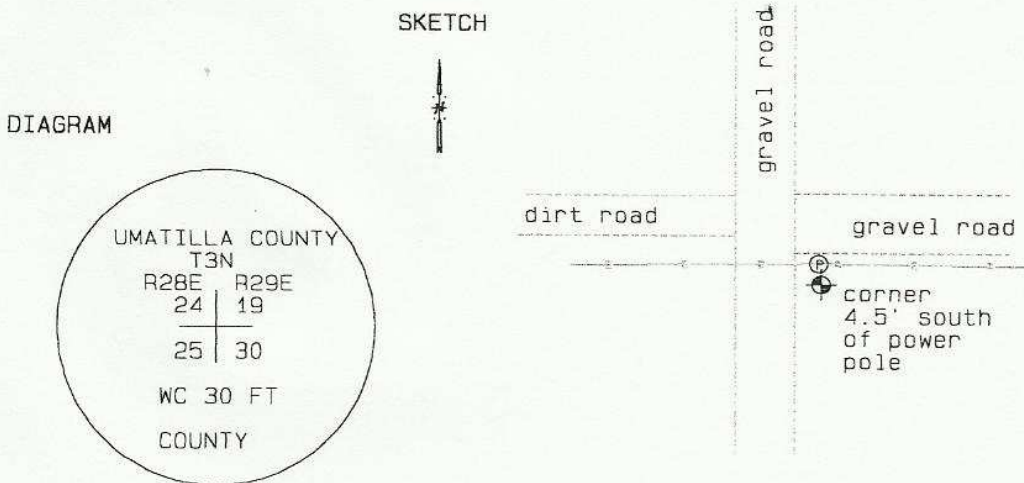
x	Condition Report Only
	Not Found
	Remonumented
	Unrecorded
x	Surveyed In
	Referenced Out

Previous Renewals / Surveys, etc.

Survey H-107-B records setting a brass capped monument here.  
 Survey 84-56-B records finding a brass cap monument here.

Monument and Accessories Found: ( condition and source )

Found a brass capped witness monument 16" below the surface stamped as shown in the diagram below.



MONUMENT (S) AND ACCESSORIES SET (Procedures and Description)

None.

REFERENCES SET:

None.

Made GPS tie to TRI Station Stanfield East Base.	Oregon State Plane Coord. - North Zone
Latitude 45°43'59.35234" N	Northing 755633.95
Longitude 119°18'38.61254" W	Easting 8505768.89
NAD 83 (1991)	Ortho Height 658.36
	Ellipsoidal Height 588.70

Location and Comments

Compass Declination  
20 °E

Surveyors Seal

From the junction of Highways 320 and 207, go east 2.3 mile. Follow a gravelled field road 1.5 miles north to the corner.

REGISTERED  
 PROFESSIONAL  
 LAND SURVEYOR

RECEIVED BY:

Firm / Agency

*David L. Haddock*

Date: 7-02  
 Rec'd By: KK  
 No. 02-185-g

Haddock Surveying  
 P. O. Box 1574  
 Pendleton, OR 97801  
 (541) 276-2174

OREGON  
 JULY 12, 1968  
 DAVID L. HADDOCK  
 852

RENEWS 6-30-03