

OREGON CORNER RESTORATION FORM

SECTION 24 TOWNSHIP 3N RANGE 27E p-25

COUNTY: UMATILLA DATE 6/90

CORNER DESIGNATION

East 1/4 Corner

- CONDITION REPORT ONLY
- NOT FOUND
- RENEWED
- UNRECORDED
- SURVEYED IN
- REFERENCED OUT

PREVIOUS RENEWALS/SURVEYS, ETC.

In May 1940 Gould of the G.L.O. did a Dependent Resurvey and set a 1" iron pipe with a 2 1/2" brass cap at this corner.

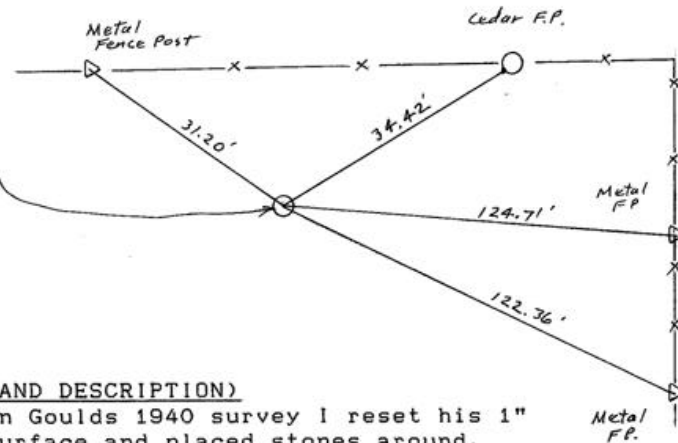
MONUMENTS & ACCESSORIES FOUND: Condition and Source

Found 1" iron pipe with 2 1/2" brass cap stamped as below bent over and slightly out of position.

MONUMENT DETAIL



SKETCH



MONUMENT SET (PROCEDURES AND DESCRIPTION)

By single proportion as in Goulds 1940 survey I reset his 1" iron pipe .2 foot above surface and placed stones around. See Co. Survey # 90-52-A

NEW ACCESSORIES

- from which an alum. tag in cedar fence post bears N 58° 44' 30" E 34.42 ft.
- a steel f.p. painted red bears S 86° 43' 40" E 124.71 feet.
- a steel f.p. painted red bears S 65° 48' 50" E 122.36 feet.
- a steel f.p. painted red bears N 55° 22' 20" W 31.20 feet.

LOCATION & COMMENTS

From the intersection of Echo Hwy & Butter Cr. Hwy go West on gravel rd. 1 mile. Then go Nely 1 mile on grav. rd. Cor. lies 125 ft. Wly of fence cor.

COMPASS DEC. FIRM EDWARDS SURVEYING P.O. BOX 763, HERMISTON, OREGON, 97838 PARTY CHIEF D. EDWARDS NOTES WITNESS J. COPPOCK

SURVEYOR'S SEAL

REGISTERED PROFESSIONAL LAND SURVEYOR

G. Dennis Edwards

OREGON JULY 18, 1971 G. DENNIS EDWARDS 951

Umatilla County Surveyor

Date 7-90

Rec'd By KA