

OREGON CORNER RESTORATION FORM

SECTION 25 TOWNSHIP 3N RANGE 27E T-25

COUNTY: UMATILLA DATE 6/90

CORNER DESIGNATION

East 1/4 Corner

CONDITION REPORT ONLY
 NOT FOUND
 RENEWED
 UNRECORDED
 SURVEYED IN
 REFERENCED OUT

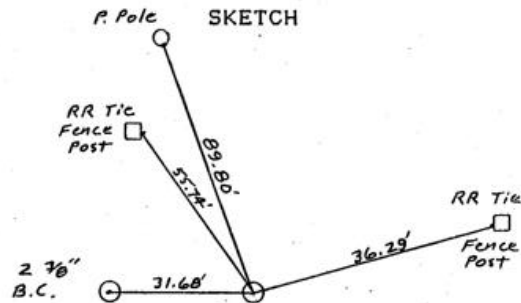
PREVIOUS RENEWALS/SURVEYS, ETC.

In May 1940 Otis Gould did a Dependent Resurvey of this Township and set a 1" I. pipe with a 2 1/2" BC at this corner and a WC 50Lks East.

MONUMENTS & ACCESSORIES FOUND: Condition and Source

Nothing found

MONUMENT DETAIL



MONUMENT SET (PROCEDURES AND DESCRIPTION)

By retracing Goulds 1940 Survey I set a 1"x 30" I Pipe with a 2 3/8" BC, stamped as above, .4 foot below the surface of a graveled road. See Co. Survey # 90-52-A

NEW ACCESSORIES

from which
alum. tag in RR tie FP bears N 76° 01' E 36.29 feet.
1" x 30" I pipe with 2 3/8" BC bears N 89° 34' 10" W 31.68 ft.
alum. tag in RR tie FP bears N 35° 24' 20" W 55.74 feet.
Alum. tag in P. pole bears N 20° 43' 30" W 89.80 feet.

LOCATION & COMMENTS

From intersection of Echo Hwy with Butter Cr. Hwy. go West .7 mile to intersection of gravel rds. Corner lies 60 feet south.

COMPASS DEC. 18
FIRM EDWARDS SURVEYING
P.O. BOX 763, HERMISTON,
OREGON, 97838
PARTY CHIEF D. EDWARDS
NOTES
WITNESS J. COPPOCK

SURVEYOR'S SEAL

REGISTERED
PROFESSIONAL
LAND SURVEYOR

G. Dennis Edwards

OREGON
JULY 16, 1971
G. DENNIS EDWARDS
95J

RECEIVED BY
Umatilla County Surveyor
Date 7-90
Rec'd by RA
No. 90-52-A