

**OREGON CORNER RESTORATION FORM**

Section 3, 4  
County Umatilla

Township 3N  
Date: 12/31/08

Range 29E

Corner Designation: 3N29A13

Section corner common to sections 33,34, T4NR29E, 4,3, T3NR29E.

- Condition Report Only
- Not Found
- Remonumented
- Unrecorded
- Surveyed In
- Referenced Out

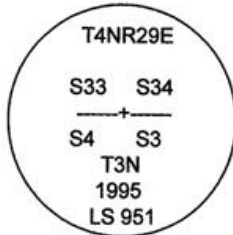
**Previous Renewals / Surveys, etc.**

Originally Surveyed by Gates in 1859. He set a post in a mound of earth.  
In 1995 Edwards set a 1" x 30" Iron pipe with a 2 3/8" B.C., by single proportion.  
In 2002 Primm found a 2 3/8" B.C.  
In 2002 Haddock found a 2 1/2" B.C.

**Monuments and Accessories Found: (Condition and Source)**

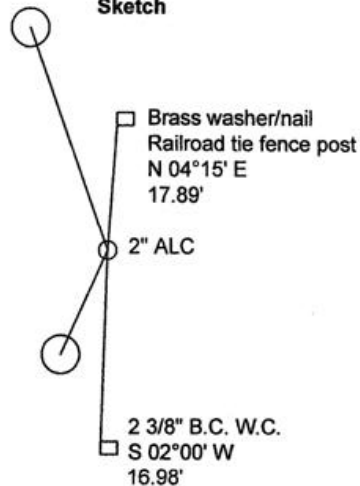
An aluminum tag #951 and nail on a power pole lies N 19°30' W, 38.75'  
An aluminum tag #951 and nail on a power pole lies S 24°30' W, 17.60'.  
A 2 3/8" B.C. W.C. lies S 02°00' W, 16.98'.  
A 2" ALC.

Diagram



Aluminum tag/nail  
Power Pole  
N 19°30' W  
38.75'

Sketch



Aluminum tag/nail  
Power pole  
S 24°30' W  
17.60'

NAD 83/91  
OREGON STATE PLANE NORTH  
INTERNATIONAL FEET

N772166.60  
E8537749.61

LAT - 45° 46' 37.66347" N LON - 119° 11' 04.00159" W

**Monument (s) Set (Procedures and Description)**

None.

**References Set:**

A brass washer #43406 and nail on a railroad tie fence post lies N 04°15' E, 17.89'.

**Location and Comments**

The corner is in the intersection  
of County Rd. #655 and Old  
Stage Gulch Rd.

**Compass Declination**  
17° E

**Surveyors Seal**

REGISTERED  
PROFESSIONAL  
LAND SURVEYOR,

*Robert D. English*  
OREGON  
JANUARY 7, 2005  
ROBERT DOUGLAS ENGLISH  
43406LS

RECEIVED BY:

Date: 1-11  
Rec'd By: KE  
No. 11-008-R

**Firm / Agency**

Survey One, LLC.  
P.O. Box 382  
Pendleton, OR 97801  
(541) 276-2055

RENEWAL DATE: 12/31/09