

**OREGON CORNER STORAGE FORM**

Section 5,6,7,8  
County Umatilla

Township 3N  
Date: 01/10/09

Range 29E

Corner Designation: 3N29E5

Section Corner common to sections 5,6,7 and 8, T3NR29E

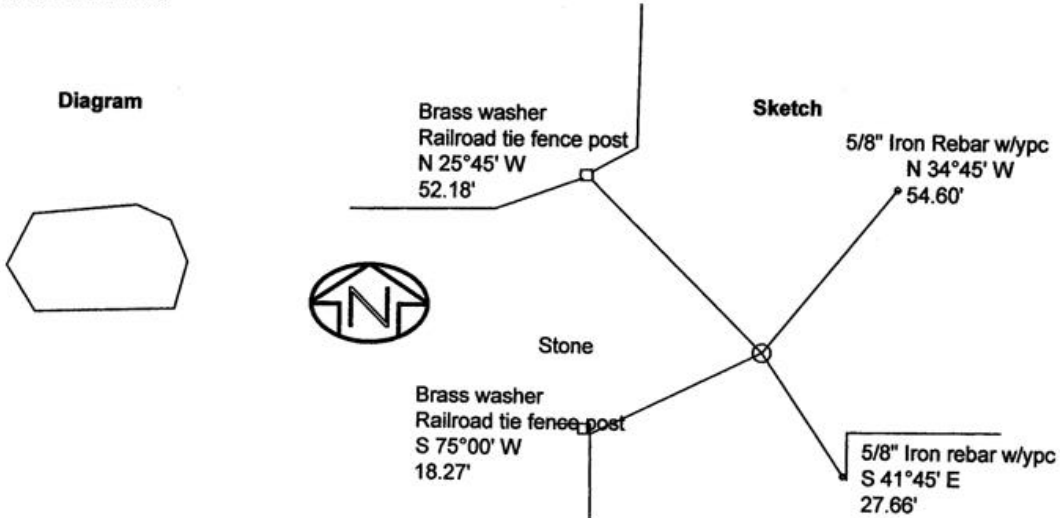
- \_\_\_\_\_ Condition Report Only
- \_\_\_\_\_ Not Found
- \_\_\_\_\_ Remonumented
- \_\_\_\_\_ Unrecorded
- \_\_\_\_\_ Surveyed In
- X   Referenced Out

**Previous Renewals / Surveys, etc.**

Originally Surveyed by Gates in 1859. He set a post in a mound of earth.  
In 2001 Haddock found a 1 1/2" steel shaft.

**Monuments and Accessories Found: (Condition and Source)**

A 1 1/2" steel shaft.



NAD 83/91  
OREGON STATE PLANE NORTH  
INTERNATIONAL FEET

N 766546.326  
E 8524684.489  
LAT - 45° 45' 44.2416" N LON - 119° 09.5595" W

**Monument (s) Set (Procedures and Description)**

None.

**References Set:**

- A brass washer #43406 and nail on a railroad tie fence post lies N 25°45' W, 52.18'.
- A 5/8" x 30" Iron rebar w/ypc lies N 34°45' E, 54.60'.
- A 5/8" x 30" Iron rebar w/ypc lies S 41°45' E, 27.66'.
- A brass washer #43406 and nail on a railroad tie fence post lies S 75°00' W, 18.27'.

**Location and Comments**

From the intersection of Echo Meadows Rd. and Umatilla Meadows Rd. go South 1 mile to the corner.

**Compass Declination**  
17° E

**Surveyors Seal**

REGISTERED  
PROFESSIONAL  
LAND SURVEYOR

*Robert D. English*  
OREGON  
JANUARY 11, 2005  
ROBERT DOUGLAS ENGLISH  
43406LS

**RECEIVED BY:**

Date: 1-09  
Rec'd By: KK  
No. 09-24-R

**Firm / Agency**

Survey One, LLC.  
P.O. Box 382  
Pendleton, OR 97801  
(541) 276-2055

RENEWAL DATE: 12/31/09