

GPS CONTROL STATION

OREGON STATE PLANE, NORTH ZONE

STATION NAME: 3N29G9 GEODETIC COORDINATE: NAD 83(91)

SECTION: W 1/4 S9 LAT: 45°45'18.64885" N  
T. 3N., R. 29 E., W. M. LONG: 119°12'16.35153" W  
UMATILLA COUNTY  
OREGON

STATE PLANE CO-ORDINATES,  
NAD 83-91, INT. FT. :

DATE SURVEYED: March, 1998

N: 764081.556

E: 8532750.787

SURVEYOR: DAVID L. HADDOCK  
PLS 852

THETA: 0°55'7.39"

SCALE FACTOR: 0.99994798

ELEV: 744

FIRM: HADDOCK SURVEYING  
P. O. BOX 1574  
PENDLETON, OR 97801  
(541) 276-2174

ELEV. DATUM: NGVD29

HORIZONTAL ORDER: SECOND ORDER,  
CLASS I

---

LOCATION: From the intersection of US Interstate 84 and US Highway 395 go south on US 395 approximately 1/2 mile to the intersection of Bowman Rd. Go west on Bowman Rd approximately 1/4 mile to the point where the road turns to the north. The cap is in the intersection of the visible road ways. There are two caps at this location. The filed corner certificate should be consulted when using this corner. The coordinates shown on this form are for the cap stamped 1998, PLS852.

STATION: Station is a 2 1/4 inch brass cap on a galvanized iron pipe approximately 6 inches below the surface of the road.



*David L. Haddock*



**OREGON CORNER RESTORATION FORM**

Section 9 Township 3N Range 29E  
 County Umatilla Date: May 11, 1998

Corner Designation: **3N29G9**

Condition Report Only  
 Not found

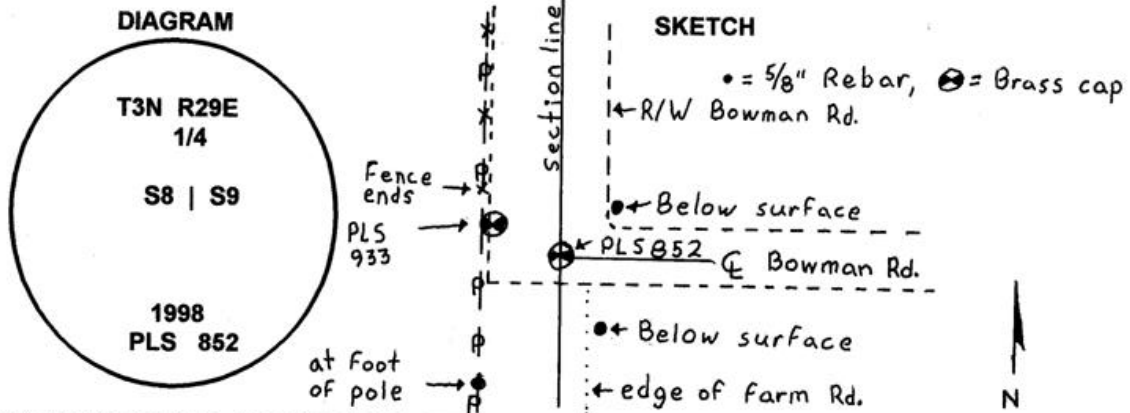
1/4 corner common to sections 8 and 9,  
 T3N, R29E, W.M.

Remonumented  
 Unrecorded  
 Surveyed in  
 Referenced out

Previous Renewals / Surveys, etc.

Corner originally established by Gates in 1859 under contract No. 84 was a post in a mound of earth. John Kimbrell set a cedar post over stone coal with stone coal witness marks in the record of private surveys book 1, page 582. PLS 933 established a point for this corner in 1974 in survey No. 98-11-B. PLS 933 found and a wagon axle (not of record) at this point in 1981 and set a brass cap in it's place.

Monument and Accessories found: ( condition and source )  
 Found the brass cap set by PLS 933 bent out of position.



**MONUMENT (S) AND ACCESSORIES SET (Procedures and Description)**

Set a 2 1/4 inch brass cap on a 1 1/8" x 30" galvanized iron pipe 6 inches below the surface of the road at the intersection of the north-south section line and the east-west centerline of Bowman Road which came to the quarter corner according to the county road notes.

**REFERENCES SET:**

- A brass capped corner set by PLS 933 lies N71°47'02"W, 19.00 feet flush with the surface of the ground.
- A 5/8" x 24" rebar with a 1 1/8" red plastic cap stamped ORLS 852, and WALs 13922 bears N47°21'11"E, 30.90 feet, 1 foot below the surface.
- A 5/8" x 24" rebar with a 1 1/8" red plastic cap stamped ORLS 852, and WALs 13922 bears S18°26'35"E, 26.09 feet, 1 foot below the surface.
- A 5/8" x 24" rebar with a 1 1/8" red plastic cap stamped ORLS 852, and WALs 13922 bears S23°02'56"W, 68.54 feet at the foot of a power pole.

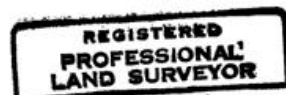
Location and comments

Compass Declination

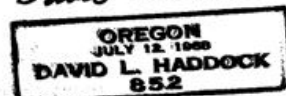
Surveyors Seal

RECEIVED BY:  
Umatilla County Surveyor  
 Date: 8-98  
 Rec'd By: KX  
 No. 98-155-C

Firm / Agency  
 Haddock Surveying  
 Address  
 P.O. Box 1574  
 Pendleton, Or. 97801  
 Party Chief  
 Stephen K, Haddock



*David L. Haddock*



RECEIVED BY  
 Umatilla County Surveyor  
 Date \_\_\_\_\_  
 Rec'd By \_\_\_\_\_  
 No. \_\_\_\_\_