

OREGON CORNER RESTORATION FORM

Section 7 Township 3N
County Umatilla Date: 08/18/09

Range 29E

Corner Designation: 3N29J3

1/4 Corner common to sections 7 and 18, T3N29E.

- Condition Report Only
- Not Found
- Remonumented
- Unrecorded
- Surveyed In
- Referenced Out

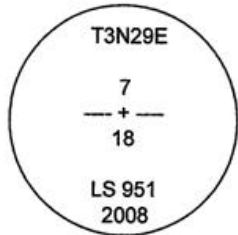
Previous Renewals / Surveys, etc.

Originally Surveyed by N.H. Gates in 1859. He set a post in a mound of earth.
Partition Plat 2008-24 Edwards set 1" x 30" Iron Pipe with 2 3/8" Brass Cap.

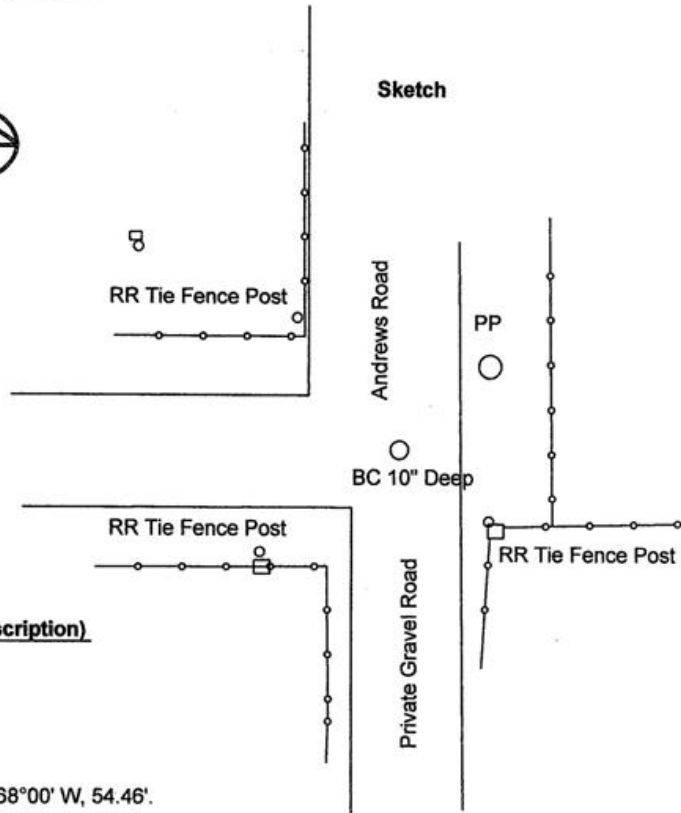
Monuments and Accessories Found: (Condition and Source)

- A 2.5" B.C.
- A 5/8" Iron rebar w/ypc #951 lies N 37°00' E, 26.66".
- A 5/8" Iron rebar w/ypc #951 lies S 40°30' W, 22.55".

Diagram



Sketch



NAD 83/91
OREGON STATE PLANE NORTH
INTERNATIONAL FEET

N761219.67
E8524767.14

LAT - 45° 44' 51.64577" N
LON - 119° 14' 09.56926" W

Monument (s) Set (Procedures and Description)
None.

References Set:

- A 5/8" x 30" Iron rebar w/ypc #43406 lies N 68°00' W, 54.46'.
- A 5/8" x 30" Iron rebar w/ypc #43406 lies S 39°00' E, 23.04'.

Location and Comments

The corner is 1 mile South of the the intersection of Andrews Road and Echo Meadows Road.

Compass Declination
17° E

Surveyors Seal

REGISTERED
PROFESSIONAL
LAND SURVEYOR

Robert D. English
OREGON
JANUARY 11, 2005
ROBERT DOUGLAS ENGLISH
43406LS

RECEIVED BY:

Date: 1-11
Rec'd By: KK
No. 11-13-R

Firm / Agency

Survey One, LLC.
P.O. Box 382
Pendleton, OR 97801
(541) 276-2055

RENEWAL DATE: 12/31/09