

GPS CONTROL STATION

OREGON STATE PLANE, NORTH ZONE

STATION NAME: 3N29N9 GEODETIC COORDINATE: NAD 83(91)

SECTION: SW COR S16 LAT: 45°44'0.11821" N
T. 3N., R. 29 E., W. M. LONG: 119°12'17.32657" W
UMATILLA COUNTY
OREGON

STATE PLANE CO-ORDINATES,
NAD 83-91, INT. FT. :

DATE SURVEYED: March, 1998

N: 756127.335

SURVEYOR: DAVID L. HADDOCK
PLS 852

E: 8532809.173

THETA: 0°55'6.70"

SCALE FACTOR: 0.99994315

ELEV: 695

FIRM: HADDOCK SURVEYING
P. O. BOX 1574
PENDLETON, OR 97801
(541) 276-2174

ELEV. DATUM: NGVD29

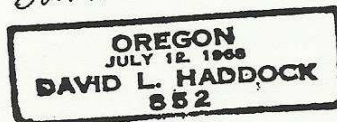
HORIZONTAL SECOND ORDER,
ORDER: CLASS I

LOCATION: From main street in the City of Echo go southwest on Oregon Highway 320 approximately 3/4 of a mile to the farm dump on the east side of the highway just south of the Westland main canal. Take the field road on the south side of the dump to the east around the first irrigated circle into the draw on the east side of this circle. The cap is about two feet below the surface in the second farm circle and may be located by measurement from the angle iron bearing objects as shown on the filed corner certificate.

STATION: Station is a 2 1/4 inch brass disc on a galvanized iron pipe approximately 2 feet below the surface in a pivot irrigated farm field.



David L. Haddock



OREGON CORNER RESTORATION FORM

Section 16 Township 3N Range 29E
 County Umatilla Date: March 31, 1998

Corner Designation: **3N29N9**

Condition Report Only
 Not found
 Remonumented
 Unrecorded
 Surveyed in
 Referenced out

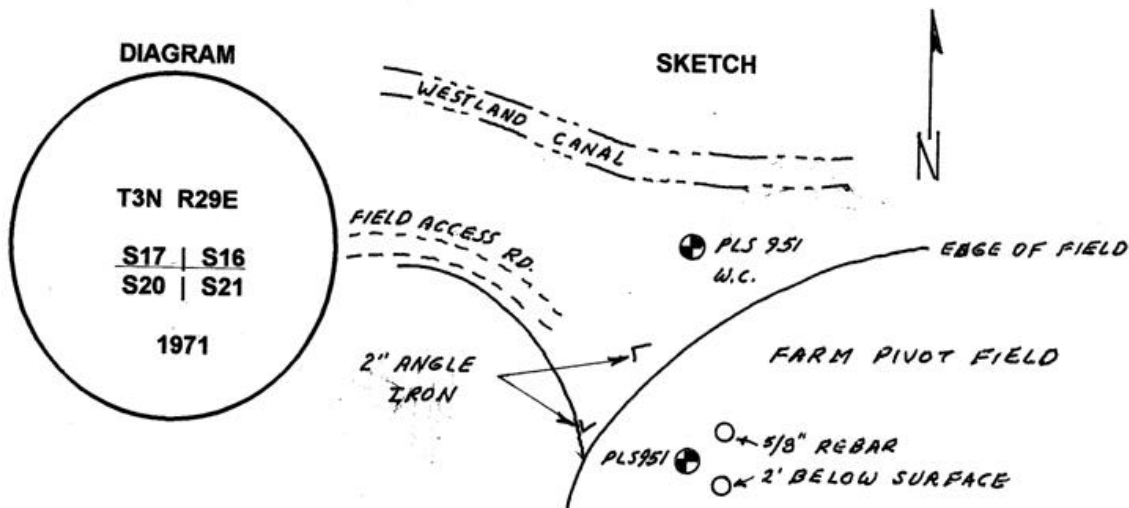
Section corner common to sections 16, 17, 20, and 21,
 T3N, R29E, W.M.

Previous Renewals / Surveys, etc.

Corner originally established by Gates in 1859 under contract No. 84 was a post and a mound of earth. John Kimbrell set an unspecified monument at this location in 1904. Don Staebler set a brass cap at the position of charcoal he found at a fence corner.

Monument and Accessories found: (condition and source)

Found the brass cap set by Staebler in good condition 2 feet below the surface in a plowed field. A brass capped witness corner set by PLS 951 bears N0°05'03"E, 399.94 feet.
 A 2" galvanized angle iron post bears N89°21'02"W, 496.53 feet.
 A 2" galvanized angle iron post bears N44°53'16"W, 274.86 feet.



MONUMENT (S) AND ACCESSORIES SET (Procedures and Description)

REFERENCES SET:

A 5/8" x 24" rebar with a 1 1/8" red plastic cap stamped ORLS 852 and WALS 13922 bears N47°53'14"E, 26.27 feet 24" below the surface.
 A 5/8" x 24" rebar with a 1 1/8" red plastic cap stamped ORLS 852 and WALS 13922 bears S42°15'29"E, 24.17 feet 24" below the surface.

Location and comments

Compass Declination

Surveyors Seal

RECEIVED BY:

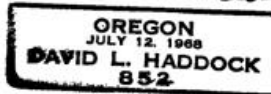
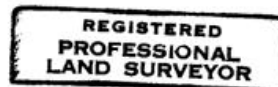
Umatilla County Surveyor

Date: 8-98

Rec'd By: AK

No. 98-155-C

Firm / Agency
 Haddock Surveying
 Address
 P.O. Box 1574
 Pendleton, Or. 97801
 Party Chief
 Stephen K, Haddock



RECEIVED BY

Umatilla County Surveyor

Date: _____

Rec'd by: _____

No. _____