

OREGON CORNER RESTORATION FORM

Section 26 Township 3N
County Umatilla Date: 10/01/09

Range 29E

Corner Designation: 3N29R19

1/4 corner common to sections 23 and 26 T3NR29E.

- Condition Report Only
- Not Found
- Remonumented
- Unrecorded
- Surveyed In
- Referenced Out

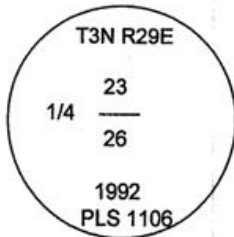
Previous Renewals / Surveys, etc.

Originally Surveyed by Gates in 1859. He set a post in a mound of earth.
In 1992 Wells set a 2 1/2" Brass cap, Survey 92-65-C
In 2002 Haddock found a 2 1/2" Brass cap.

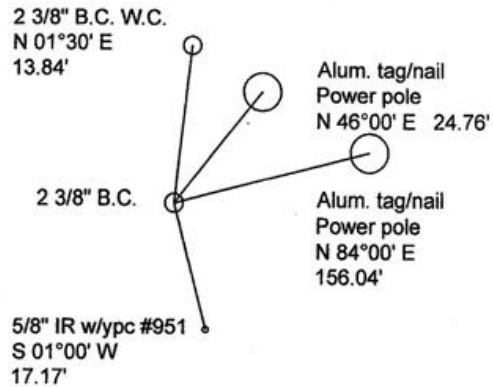
Monuments and Accessories Found: (Condition and Source)

- A 2 1/2" B.C.
- A 5/8" Iron rebar w/ypc #1106 lies N 00° 00' E, 54.15'.
- A Brass waher #1106 on a railroad tie fence post lies N 07°00' E, 6.3.3'.
- A 5/8" iron rebar w/ypc #1106 lies N 87° 30' E, 29.02'.
- A 5/8" iron rebar w/ypc #1106 lies S 00° 00' E, 30.95'.

Diagram



Sketch



NAD 83/91
OREGON STATE PLANE NORTH
INTERNATIONAL FEET

N751100.04
E8546189.06

LAT - 45° 43' 08.33012" N
LON - 119° 09' 09.89972" W

Monument (s) Set (Procedures and Description)

None.

References Set:

None.

Location and Comments

The corner is 2 miles south of the intersection of Hwy. 320 and Coppinger Lane on dirt road, then West 1.5 miles on foot to the corner.

Compass Declination
17° E

Surveyors Seal

REGISTERED
PROFESSIONAL
LAND SURVEYOR

Robert D. English
OREGON
JANUARY 11, 2005
ROBERT DOUGLAS ENGLISH
43406LS

RENEWAL DATE: 12/31/09

RECEIVED BY:

Date: 1-11
Rec'd By: KK
No. 11-17-P

Firm / Agency

Survey One, LLC.
P.O. Box 382
Pendleton, OR 97801
(541) 276-2055