

OREGON CORNER RESTORATION FORM

Section 34 Township 3N Range 31E

2-13

County Umatilla Date Sept 8, 1988

CORNER DESIGNATION

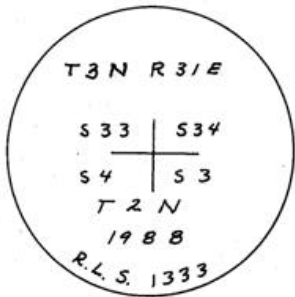
- Condition Report Only
- Not Found
- Renewed
- Unrecorded
- Surveyed In
- Referenced Out

Previous Renewals/Surveys, etc. Originally a post, pits, & mounds (Josiah A. Burnett Sept., 1960)

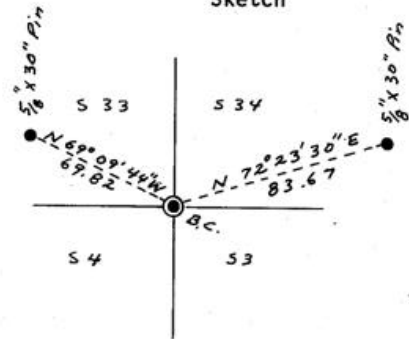
Monument(s) & Accessories Found: (Condition and Source)

I found 1 1/4" G.I.P. I set in 1973 from Oregon State Highway Dept. ties (sta T60 + 57.50). It appeared undisturbed. This corner lies in the county road running east and west and one going north from here.

Monument Detail



Sketch



Monument Set (Procedures and Description)

Set 1" x 30" G.I.P. w/flared base and 2 1/2" brass cap 6" below the surface of the gravel road. The monument replaced the 1 1/4" G.I.P.

New Accessories

A 5/8" x 30" rebar witness monu. bears N69°09'44"W 69.82'

A 5/8" x 30" rebar witness monu. bears N72°23'30"E 83.67'

Each monu. marked R.L.S. 1333. Set steel fence post near each W.C. with yellow witness signs attached.

Location & Comments

Corner is located on

County Road

Compass Declination

Firm/Agency Don Staebler

Engineer-Surveyor

Address 1532 SW 41st

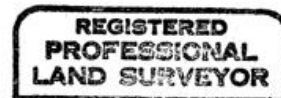
Pendleton, OR 97801

Party Chief Don Staebler

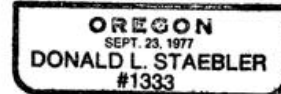
Notes

Witness

Surveyor's Seal



Donald L. Staebler



RECORDED BY
Umatilla County
 Date 9-88
 Rec'd by KA
 No. 88-61-C