

OREGON CORNER RESTORATION FORM

COUNTY: Umatilla DATE: 04/21/04

CORNER DESIGNATION: L-13, The East One-Quarter corner of Section 16, Township 3 North, Range 32 East, W.M., Umatilla County, Oregon.

PREVIOUS RENEWALS/SURVEYS ETC.: Corner was originally established by David P. Thompson, under GLO contract No. 106, dated August 16, 1864. Record states: Set post for 1/4 Sec. corner in mound of Earth with charred stake, pits &c as per instructions.

MONUMENT AND ACCESSORIES FOUND: State Highway centerline running North-South and field and power line running West.

MONUMENT MARKING DETAIL:

WC
35.0
→
FEET
T3NR32E
1/4
S16 | S15
2004
PLS 1106

MONUMENT SET: Accepted intersection of centerline of State Highway No. 37 and field and power line running West as best remaining evidence of original corner location. To avoid State Highway, set a witness corner monument, a 2 1/2" brass cap on a 1 1/4" x 30" galvanized iron pipe, 28" in the ground, marked as shown in "Monument Marking Detail". Witness Corner monument is North 89°20'25" West., 35.00 feet from corner point in Highway.

New Accessories:

- The most Northerly guy anchor of PPL pole #SW92-25T, bears N88°E, 63.8 feet. Measured to where guy anchor enters the ground.
- A 3/4" brass washer, nailed 1 foot above ground level and stamped "PLS 1106", in PPL pole #SW92-25T bears S 49° E, 76.5 feet.
- A 3/4" brass washer, nailed 1 foot above ground level and stamped "PLS 1106" in PPL pole #169462 bears N 68° W, 8.5 feet.
- The most Southerly guy anchor for PPL pole #169462 bears N 09° E, 47.7 feet. Measured to where guy anchor enters the ground.
- Nailed bearing object signs to power pole accessories.
- Set steel fence post with "witness" sign attached 1 foot North of witness corner monument.

LOCATION AND COMMENTS: Corner is located on a high bank on the West side of State Highway No. 37.

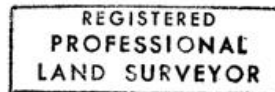
FIRM: William R. Wells, PLS
P.O. Box 1696
Pendleton, OR 97801

COMPASS DECLINATION: 18° East

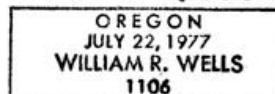
Surveyor's Seal

Witnesses: Jason Wells, LSIT
Marc Hammersla

\3N32L13



William R. Wells



renews 6-30-04