

OREGON CORNER RELOCATION FORM

Section 27 Township 3N Range 32E
 County Umatilla Date: August 14, 1997

Corner Designation: 3N32R15

1/4 corner common to sections 22 and 27
 T3N, R32E, W.M.

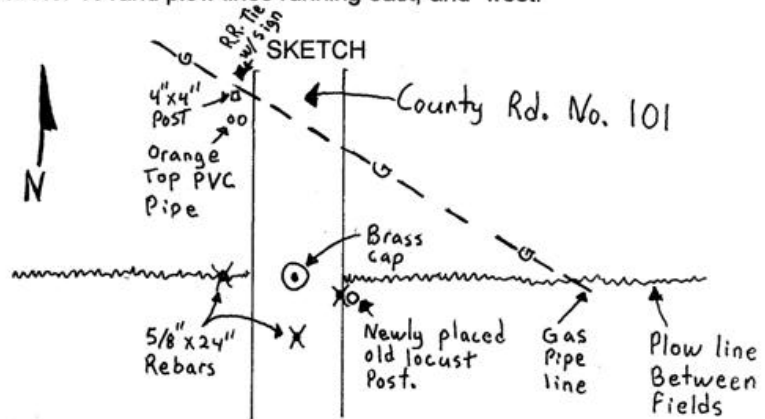
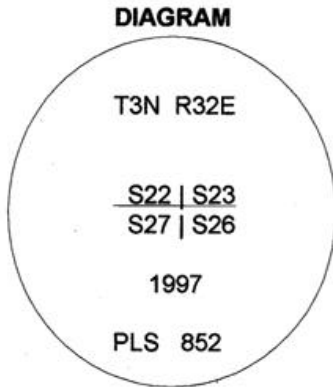
Condition Report Only
 Not found
 Remonumented
 Unrecorded
 Surveyed in
 Referenced out

Previous Renewals / Surveys, etc.

Corner originally set by Daniel Chaplin under contract No. 107 Dated September 21, 1864.
 His record reads: Set post for corner to Sec.s 22, 23, 26, & 27 in mound of earth with charred stake, pits and C as per instructions.

Monument and Accessories found: (condition and source)

Intersection of centerline of County road No. 101 and plow lines running east, and west.



MONUMENT (S) AND ACCESSORIES SET (Procedures and Description)

Set a 2 1/2" Brass cap on a 1 1/4"x30" galvanized iron pipe 10" below the surface of the road at the intersection of the road centerline and the plow line running east and west.

For references, I set three 5/8" by 24" rebars with 1.25" red plastic caps stamped ORLS 852 and WALS 13922 as described below:

a rebar bears S72°28'E, 12.13 feet at the foot of a locust post set in position by an unknown party after the commencement of this survey.

a rebar bears S00°02'E, 21.40 feet 18" below the surface of the road;

a rebar bears S87°16'W, 26.75 feet 18" below the surface in a plowed field;

The center of a 4x4 post next to the signs on a natural gas pipeline bears N02°44'W, 250.1 feet;

The monument was surveyed and references tied using Two wild System 200 GPS receivers.

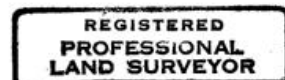
Location and comments
 Witnessed by Mathew Severe

Compass Declination

Surveyors Seal

RECEIVED BY:
Umatilla County Surveyor
 Date: 9-97
 Rec'd By: KK
 No. 97-172-B

Firm / Agency
 Haddock Surveying
 Address
 P.O. Box 1574
 Pendleton, Or. 97801
 Party Chief
 Stephen K, Haddock



David L. Haddock

