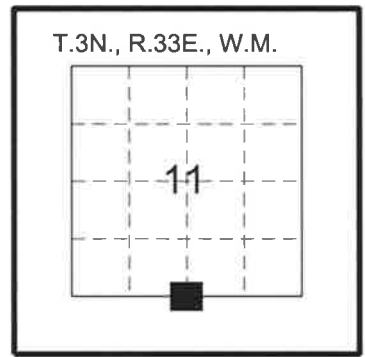


**CERTIFIED RECORD OF LAND CORNER MONUMENTATION**

**HISTORY OF ORIGINAL CORNER ESTABLISHMENT:**

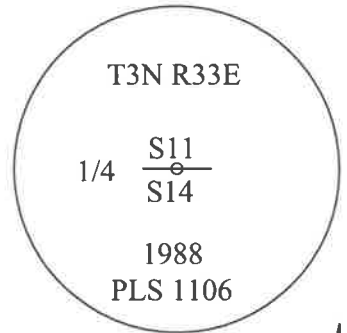
The corner was originally surveyed by Daniel Chaplin under GLO contract No. 107, dated Sept. 21, 1864 and approved Jan. 24, 1865. His notes state:  
Set post for 1/4 Sec. Cor. in mound of Earth with charred stake, pits and etc. as per instructions.

J19



**SUBSEQUENT CORNER ESTABLISHMENT:**

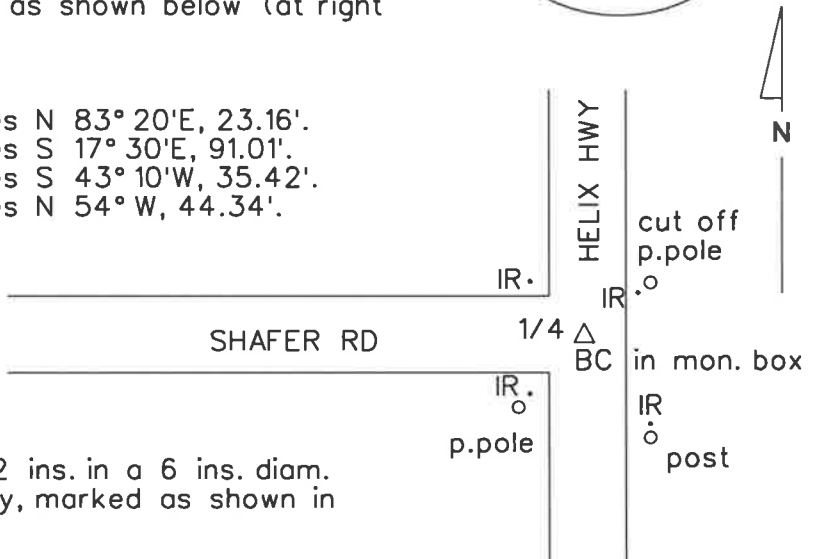
Bill Wells reestablished the corner in 1988 in Survey No. 88-017-B, and filed a separate monumentation record. His notes state:  
At the reestablished corner point I set a 2 1/2" brass cap on a 1 1/2" by 16" galv. iron pipe, in a monument box consisting of a 15" pvc pipe sleeve and monument access cover, in the pavement of State Highway No. 335, and surrounded the monument with mortar. Referenced the monument as follows. From the new monument:  
The top centerline of a PNB phone pedestal bears S39°E 39.3'.  
An aluminum nail in the NW side of BPA pole no. PT ST 32 5, bears S45°W 36.96'. The aluminum nail is about 1' above ground.



Robert English recovered the corner in 2012 in Survey No. 12-094-C and set new accessories. He filed a separate monumentation record. His notes state:  
Monuments and Accessories Found:  
A 2 1/2" brass capped monument stamped as shown below (at right on this sheet), in a monument box.

**References Set:**

- A 5/8" x 30" iron rebar w/RPC \*43406, lies N 83° 20'E, 23.16'.
- A 5/8" x 30" iron rebar w/RPC \*43406, lies S 17° 30'E, 91.01'.
- A 5/8" x 30" iron rebar w/RPC \*43406, lies S 43° 10'W, 35.42'.
- A 5/8" x 30" iron rebar w/RPC \*43406, lies N 54° W, 44.34'.



**DESCRIPTION OF CORNER EVIDENCE FOUND:**

Found a 2 3/8 ins. diam. brass cap, down 2 ins. in a 6 ins. diam. damaged monument box in center of highway, marked as shown in diagram above.

**From which:**

- Fd. a 1 1/2 ins. diam. red plastic cap (RPC) on a 5/8 ins. diam. iron rod (IR), mrkd. ORPLS43406 WAPLS44338 (TYP.), 0.5 ft. SW'ly of cut off power pole, bears at record (N83° 20'E, 23.16').
- Fd. a 1 1/2 ins. diam. RPC on a 5/8 ins. diam. IR, up 2 ins., 0.5 ft. N. of fence post, mrkd. TYP., bears at record (S17° 30'E, 91.01').
- Fd. a 1 1/2 ins. diam. RPC on a 5/8 ins. diam. IR, at ground, 1 ft. NE'ly of p. pole at S. side of Shafer, mrkd. TYP., bears at record (S43° 10'W, 35.42').
- Fd. a 1 1/2 ins. diam. RPC on a 5/8 ins. diam. IR, up 3 ins., in bank on N. side Shafer, mrkd. TYP., bears at record (N54° W, 44.34').

**DESCRIPTION OF MONUMENT AND ACCESSORIES I ESTABLISHED TO PERPETUATE THE ORIGINAL LOCATION OF THIS CORNER:**

After paving the highway, the brass cap monument is preserved. The pavement is cored with large drill over the said brass cap and material removed to install a 10 ins. diam. cast iron monument box around the monument leaving it now 4 ins. below the surface of the road. Quick setting cement is then placed around the cast iron box to seal road surface and hold box firmly in place.

**OR STATE PLANE NORTH ZONE  
NAD83(2011)(EPOCH:2010.0000)**

Witnesses:  
Chuck Longfield  
Peter Elder

N 763732.12  
E 8673724.17

I hereby certify that the above corner position was perpetuated as hereon described on July 11, 2017.

**RECEIVED BY**  
Umatilla County Surveyor  
Date: 8/4/17  
Rec'd By: CT  
No.: 17-098-R

REGISTERED  
PROFESSIONAL  
LAND SURVEYOR  
  
*Peter C. Elder*  
  
OREGON  
JULY 13, 1999  
PETER C. ELDER  
51277

RENEWS: 12/31/2017

OREGON DEPARTMENT OF TRANSPORTATION



Section	HWY.11 - HELIX		
Highway	OR 335, HAVANA-HELIX HWY.		
County	UMATILLA	Scale	NTS
Purpose	Corner Restoration	Date	July 13, 2017
File			