

**OREGON CORNER RESTORATION FORM**

COUNTY: Umatilla      DATE: May 1, 2012

CORNER DESIGNATION: P-19 C 1/4 Corner Section 23, T. 3 North, Range 33 E. W.M.

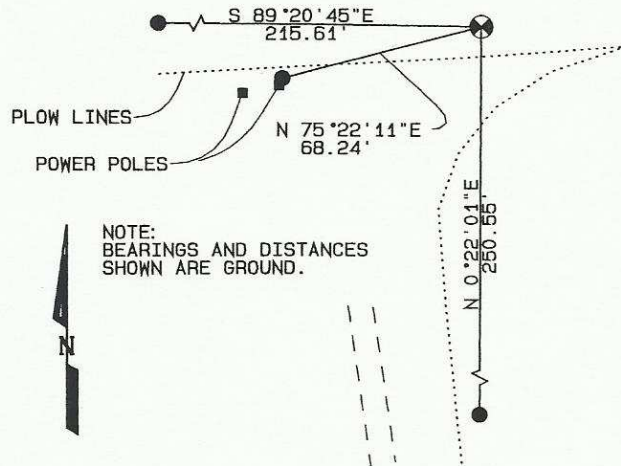
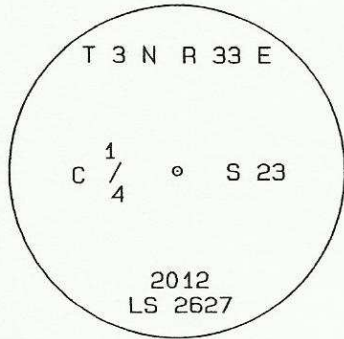
PREVIOUS RENEWALS/SURVEYS ETC.

NONE

MONUMENT AND ACCESSORIES FOUND: NONE

MONUMENT MARKING DETAIL

SKETCH: NOT TO SCALE



NOTE: BEARINGS AND DISTANCES SHOWN ARE GROUND.

- ⊗ SET 2 3/8" BRASS CAP ON 1 1/4" x 30" G.I.P. 22" BELOW GROUND
- SET 5/8" X 30" REBAR WITH YELLOW PLASTIC CAP MARKED, "UCPWD LS 2627"

**RECEIVED BY**  
 Umatilla County Surveyor  
 Date: 5/8/2012  
 Rec'd By: Jay Klett  
 No.: 12-063-C

**LOCATION AND COMMENTS:**

From the intersection of State Highway 11 and State Highway 335 travel north along Highway 335 approximately 0.4 miles to the intersection with the gravel road leading to Havana pit. Continue on said road following the direction of the overhead power lines for 500 feet. Corner is near the intersection of field plow lines.

**MONUMENT SET (PROCEDURES AND DESCRIPTION):**

The center 1/4 corner was set at the intersection of found north, south, east, and west 1/4 corners. Set a 2 3/8" brass cap marked as shown in monument marking detail 22" below the surface.

**NEW ACCESSORIES:**

A 5/8" x 30" rebar with yellow plastic cap marked, "UCPWD LS 2627" set 1 ft north easterly from easterly BPA power pole bears N75°22'11"E, 68.24'. A bearing object tag is nailed to the pole.

A 5/8" x 30" rebar with yellow plastic cap marked, "UCPWD LS 2627" set as a property corner for tax lot 700 bears N0°22'01"E, 250.55'.

A 5/8" x 30" rebar with yellow plastic cap marked, "UCPWD LS 2627" set as a property corner for tax lot 700 bears S89°20'45"E, 215.61'.

COMPASS DECLINATION: N/A

**FIRM/AGENCY:**

Umatilla County Road Dept.  
 3920 Westgate  
 Pendleton, Oregon 97801

PARTY CHIEF: Matt Kenny,  
 LSIT

NOTES: N/A

WITNESS: N/A

REGISTERED  
 PROFESSIONAL  
 LAND SURVEYOR

*Jay K. Roberts*  
 OREGON  
 JULY 20, 1993  
 GARY R. ROBERTS  
 2627

RENEWS 12/31/2012