

OREGON CORNER RESTORATION FORM

Section: 1
Township: 3 North
Range: 33 East of the Willamette Meridian
County: Umatilla
Date: 05/14/02

Corner Indexing Information: Township 3N Range 33E Corner Code A-25 (Willamette Meridian)

Additional Identifier: (e.g. BLM designation for the corner, street intersection, plat name, block, lot, etc.)

Northeast Corner Section 1

Oregon Plane Coordinates: N: 774553.686 E: 8681225.214

Zone: North **Order:** second **Datum:** NAD83-91 **Convergence:** 1°19'54.5" **Scale Factor:** 0.99987628

Previous Renewals/Surveys, etc.:

This corner was originally established by Thompson in 1864 as a post, charred stake, mound, and pits, per contract no. 106.

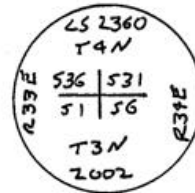
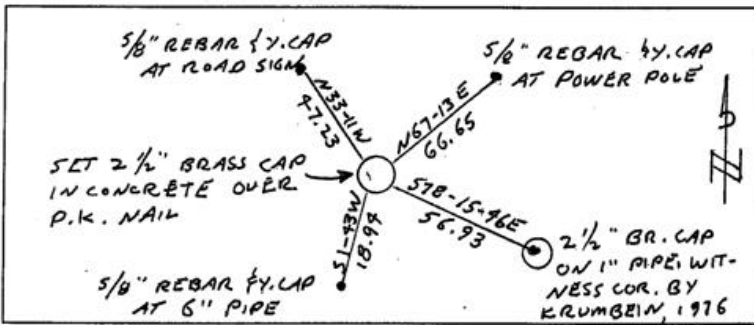
In 1976, Krumbein set a brass cap at a road intersection. (C.S. M-121-C)

Monument(s) & Accessories Found (Condition & Source):

At the Southeast corner of the Midway and Hales Road intersection, we found a 2 1/2" brass cap on a 1" pipe, marked as a "W.C." by Krumbein, dated 1976. At the position of the Section corner, we found a P.K. nail 2" below pavement.

Monument Set (Procedures & Description):

Monument Detail:



Location & Comments:

Compass Declination:

19° East

Surveyor's Seal

Firm/Agency: Tomkins Land Surveying, Inc.
 20 E. Poplar, Suite 204
 Walla Walla WA 99362

REGISTERED
 PROFESSIONAL
 LAND SURVEYOR

Paul W. P. Tomkins

Party Chief: PWPT

Notes:

Witness:

OREGON
 JULY 26, 1988
 PAUL W. P. TOMKINS
 2360

renews 6/30/04
2/10/03

RECEIVED BY

Umatilla County Surveyor

Date 2-03

Rec'd By JK

No. 03-25-a