

**Oregon Corner Resurveys Form**

Section 1-6 Township 3N Range 34E W.M.  
 County Umatilla Date October 20, 1997

Corner Designation C-25  Condition Report Only  
 Not Found  
 Renewed  
 Unrecorded  
 Surveyed In  
 Referenced Out

1 | 6 T3N R34E

**Previous Renewals / Surveys, etc.**

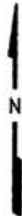
W. Odell set a corner post, with charred stake, mound, and pits in 1866. In remeasuring the Umatilla Reservation Boundary in 1887, Currin and Noland found the post, mound, and pits.

**Monument(s) & Accessories Found: (Condition and Source)**

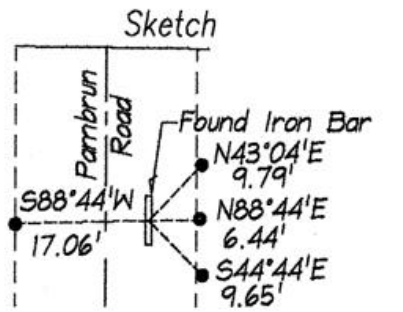
Found a 1/2" x 2" Iron Bar 12" deep 4 feet East of the centerline of Pambrun Road per the Survey in RPS Book 2, page 272, records of the Umatilla County Surveyor.

**Monument Detail**

Found 1/2" x 2" Iron Bar



Bearings are GRID,  
OR COORD SYS,  
N ZONE



RP - RR Spike stamped "2166" in edge of pavement - Typical.

**Monument Set (Procedures and Description)**

No new monument set.

**New Accessories**

A RR Spike in the edge of pavement bears S88°44'W, 17.06 feet.

A RR Spike in the edge of pavement bears N88°44'E, 6.44 feet.

A RR Spike in the edge of pavement bears N43°04'E, 9.79 feet.

A RR Spike in the edge of pavement bears S44°44'E, 9.65 feet.

**Location & Comments**

Corner is located one half mile South of Rainville Road in Pambrun Road.

Compass Declination n/a

Firm:  
Dwight M. Bartleson L.S.  
79902 LaMar Gulch Road  
Athena, OR 97813  
 Party Chief: D. Bartleson  
 Notes D. Bartleson  
 Witness none

**Surveyor's Seal**

