

CERTIFIED RECORD OF LAND CORNER MONUMENTATION

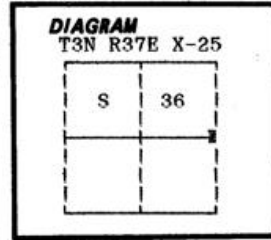
History of original corner establishment:

Corner originally established by George S. Pershin under GLO contract number 304, dated September 19, 1878. Surveyor General record states:

A Spruce 4 in diam on North slope for 1/4 sec cor

Fir 12 in diam brs East, 69 lks dist
Fir 8 in diam brs N46°W, 59 lks dist

Corner found by William E. Campbell under GLO contract number 718, dated May 1, 1900. Surveyor General record states:
A spruce grown to 8 ins diam marked and witnessed as described by the Surveyor General.



No record of subsequent monumentation found in Umatilla County survey records.

Description of corner evidence found:

Found no evidence of the original corner monument or it's accessories.

Area has been heavily logged. The corner position falls in an existing skid trail.

See map of survey dated August, 1991.

Description of monument and accessories I established to perpetuate the original location of this corner:

At position determined by survey, I set a 2 1/2" x 30" aluminum pipe with aluminum cap marked as shown, 30 inches in the ground, from which:

New Bearing Trees:

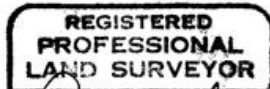
- A 8 inch diameter White Fir bears S67°E, 20.44 feet marked X X BT
- A 9 inch diameter White Fir bears S31°E, 15.63 feet marked X BT
- A 12 inch diameter White Fir bears S59°W, 9.21 feet marked 1/4 S36 BT
- A 10 inch diameter White Fir bears N42°W, 21.14 feet marked 1/4 X BT

Attached Bearing Tree and Land Survey Monument signs to the bearing trees.

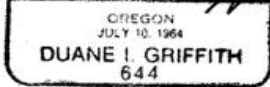
Set a steel fencepost approximately 5 feet South with Land Survey Monument sign attached.

I hereby certify that the above corner point was perpetuated as hereon described on Sept.10, 1992.

Witness: Jim Bennett



Duane I. Griffith



I used a steel tape and magnetic compass in the establishment of new accessories. I used 20° East magnetic declination and the distances are to a 50d spike driven in the right side of the root crown. I attached a brass washer marked OPLS 644 to the BT blaze.

Office of..... County of.....
State of....., I hereby certify that the within instrument was filed in this office for record on the..... day of....., 19.....
..... by (DEPUTY)
(COUNTY OFFICIAL)

Form R6-7100-57 (9/71)

RECEIVED BY

Umatilla County Surveyor

Date 10-92

Rec'd By KK

No. 92-118-R

*GPO-591-971, 1988

X-25