

COUNTY: Umatilla DATE: 5/19/97

CORNER DESIGNATION: N-11. North quarter corner Section 21, T3S., R31E., W.M.

PREVIOUS RENEWALS/SURVEYS, ETC.: Corner originally established by George S. Pershin, GLO Contract No. 319, dated March 26, 1879. Survey notes state:

Set granite stone, 16 x 14 x 10, on N. side of small knoll for 1/4 Sec. Cor.

A fir, 30 ins. diam., brs. N.45°W., 26 lks. dist.

A pine, 36 ins. diam., brs. S.45°E., 52 lks. dist.

MONUMENT AND ACCESSORIES FOUND: A 38" sawn Douglas Fir stump bears N 45° W, 17.2 feet (26 lk) with fragmentary scribe "T" and axe marks visible at bottom of blaze.

MONUMENT MARKING DETAIL:

T3S R31E

1 S16

4 S21

1997

PLS 1106

MONUMENT SET: At record reversed bearing and distance from recovered BT stump, set a 2" aluminum cap on a 5/8 in. x 24 in. iron pipe surrounded by a mound of stone, (marked as shown in the monument detail). The record bearing and distance was measured from face of blaze.

From which:

New Bearing Trees:

A 16 inch white fir with double blaze scribed "1/4 S16 BT" bears N 55° E, 9.3 feet.

A 24 inch white fir with double blaze scribed "1/4 S21 BT" bears S 72° E, 30.8 feet.

A 12 inch white fir with double blaze scribed "1/4 S21 BT" bears S 06° W., 16.2 feet.

A 20 inch white fir with double blaze scribed "1/4 S16 BT" bears N 18° W, 30.4 feet.

Attached bearing object signs to each bearing tree.

Set a steel fence post 5 feet North of monument with "witness corner" sign attached.

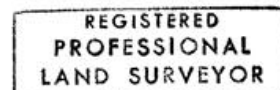
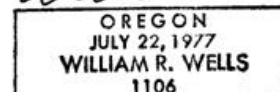
LOCATION & COMMENTS: Corner falls at the north side of a rock jack with fences extending East and West.

COMPASS DECLINATION: 18° East.

Surveyor's Seal

FIRM/AGENCY: William R. Wells, PLS
P.O. Box 1696
Pendleton, Oregon 97801Witness: Kelly Snively
Jason Wells

Note: A 5/8" iron pin was used as the monument because ground is rocky and a standard galvanized iron pipe monument could not be properly set.

*William R. Wells**renews 6/30/98*

RECEIVED BY

Umatilla County Surveyor

Date 5-97Rec'd By KKNo. 97-104-B