

USDA-FOREST SERVICE

Index

File No. V-21

T 3S R. 31E

Merid. Willamette

CORNER RECORD (SEARCH)

(Ref. FSM 7151.4)

Tract or Survey No. Sec 36 Cor. NW Cor

R.D. Ukiah County Umatilla

N.F. Umatilla State Oregon

CORNER DIAGRAM

T3S R32E

S26 | S25

S35 | S36



DESCRIBE CORNER MONUMENT FOUND

3" brass cap on 2 1/2" l. pipe protruding 12" out of ground in mound of stone.

DESCRIBE BEARING TREES OR OTHER OFFICIAL ACCESSORIES FOUND

- A Pine Stump bears N60°E 163.5 ft dist-(old BT) deteriorated.
- A 28" dia P.St.brs S10°W83.5 ft dist-(old BT) open blaze/visible scribe.
- A 40" dia P.P.brs S58 1/2°E62.0 ft dist tagg N62°W95 lk dist (old BT) open bl.
- A 15" dia P.P.brs N43°E69.2 ft dist tagg S43°W104 lk dist-recent blaze.
- A 19" dia P.P.brs N43°W69.5 ft dist tagg S41 1/2°E 105 lk dist-recent blaze.
- A 13" dia R.Firbrs S19 1/2°W63.8 ft dist tagg N19°E 97 lk dist-recent bl, dead BT

PHOTO IDENTIFICATION DATA

Photo No. 616140 780-6

Filed At. Umatilla Nat. Forest

Object Ident. Trees

Ident. By Signature

PLANE COORDINATE POSITION DATA

State \_\_\_\_\_ Zone \_\_\_\_\_

X \_\_\_\_\_

Y \_\_\_\_\_

Estab. By \_\_\_\_\_ Agency \_\_\_\_\_

DESCRIBE CORNER LOCATION RELATIVE TO NEAR-BY FEATURES, ALSO HOW TO REACH CORNER

South on Yellow Jacket Road to road #5420, then road #5420 approximately 1.6 miles to cattleguard, then West 3/4 mile to corner, in clearing on top of ridge West of Bear Creek at fence intersection to E-W and South.

Signature

*William R. Wells*

Title

PLS 1106

Division

Headquarters

Date

October 4, 1982

7100-52-(3-68)

**CORNER RECORD (PERPETUATION)**

**MONUMENT: DESCRIBE NEW MONUMENT SET, OR WORK DONE TO PRESERVE EXISTING MONUMENT**

Set steel fence posts with 54-2 signs on both and sign 54-4 sign on one,  
East and South of corner.

Cap marked:

T3S	R31E
S26	S25
S35	S36
1978	

**ACCESSORIES : DESCRIBE NEW BT'S WITNESS OBJECTS ETC. ESTABLISHED, OR WORK DONE TO PRESERVE EXISTING EVIDENCE**

A 10" dia Red Fir bears S82°W 87.0 ft dist marked: T3S R31E S35 BT.

Blaze faces and 6" band around bearing trees are painted red. Tagged trees with 54-3 and 4 signs where needed. New BT has a lower blaze, scribed BT, with brass washer stamped PLS 1106 net flush.

Work Done By W.R. Wells Title Surveyor Date 10/4/82 State Registration No. or Agency PLS 1106

Certified Cor. Record Prepared? Yes  No  Filed At: Umatilla County Surveyor Office Date \_\_\_\_\_

**REMARKS**

Witnessed by: Leslie E. Wilson

Index File No.

V-21

T.

3S

R.

32E

M.

W.M.

Tract or Surv. No.

Sec 36

Cor.

NW Cor

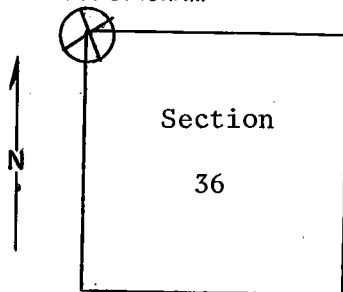
Index  
File No. V-21

## CORNER RECORD (SEARCH)

(Ref. FSM 7151.4)

Tract or  
Survey No. 5-70 Cor.  
No. V-21T 3S R. 31E R.D. Ukiah County Umatilla  
Merid. Willamette N.F. Umatilla State Oregon

## CORNER DIAGRAM



## DESCRIBE CORNER MONUMENT FOUND

Material: Fence corner only.

## DESCRIBE BEARING TREES OR OTHER OFFICIAL ACCESSORIES FOUND

48-inch p.pine with scribing on NW face (R31E, S35), 26 feet south of east-west fence, approximately 65 feet from fence corner. Bearing S62°E from corner. Oregon State Board of Forestry tag on tree. Fence line runs east, west and south.

## PHOTO IDENTIFICATION DATA

Photo No. \_\_\_\_\_  
 Filed At. \_\_\_\_\_  
 Object Ident. \_\_\_\_\_  
 Ident. By \_\_\_\_\_  
*Signature*

## PLANE COORDINATE POSITION DATA

State \_\_\_\_\_ Zone \_\_\_\_\_  
 X \_\_\_\_\_  
 Y \_\_\_\_\_  
 Estab. By \_\_\_\_\_  
*Agency*

## DESCRIBE CORNER LOCATION RELATIVE TO NEAR-BY FEATURES, ALSO HOW TO REACH CORNER

Signature B, Moore Title Engineering Technician Division \_\_\_\_\_ Headquarters S, O, Date November 1974 7100-52 (3/68)

**CORNER RECORD (PERPETUATION)**

**MONUMENT: DESCRIBE NEW MONUMENT SET, OR WORK DONE TO PRESERVE EXISTING MONUMENT**

**ACCESSORIES : DESCRIBE NEW BT's WITNESS OBJECTS ETC. ESTABLISHED, OR WORK DONE TO PRESERVE EXISTING EVIDENCE**

Work Done By \_\_\_\_\_ Title \_\_\_\_\_ Date \_\_\_\_\_ State Registration No. or Agency \_\_\_\_\_  
Certified Cor. Record Prepared ? Yes No Filed At: \_\_\_\_\_ Date \_\_\_\_\_

**REMARKS**

Index File No. T. R. M. Tract or Surv. No. Cor. \_\_\_\_\_