

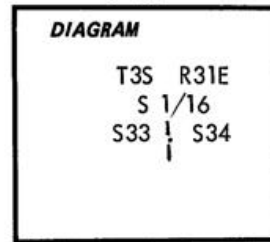
CERTIFIED RECORD OF LAND CORNER MONUMENTATION

Y-13

History of original corner establishment:

None.

No record of corner establishment found in County Records.



Description of corner evidence found:

None.

Description of monument and accessories established to perpetuate the original location of this corner:

Set 2 1/2" brass cap on 2 1/2" x 30" l. pipe 24" in ground with mound of earth from which:

A 12 1/2" dia Fir bears N63°W 42.2 ft dist marked: S 1/16 S33 BT.

A 10" dia Pine bears S22°E 97.0 ft dist marked: S 1/16 S34 BT.

Blaze faces and 6" bands around bearing trees are painted red. Tagged trees with 54-3 & 9 signs.

BTs have a lower blaze, scribed BT, with a brass washer stamped PLS 1106 nailed flush.

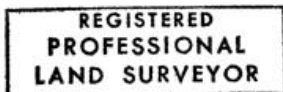
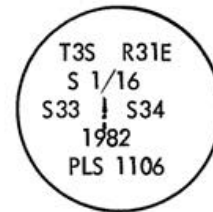
Set steel fence posts, with 54-9 sign on one and 54-2 signs on both, South and East of corner.

Used steel tape and magnetic compass 19 3/4° East declination. Measured to center of BTs.

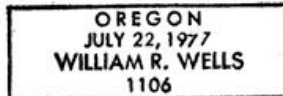
Corner monumented on October 25, 1982.

Cap marked:

Witnessed by: Robert D. English PC
D. L. Kaufman PLS



William R. Wells



Office of..... County Surveyor..... County of..... Umatilla

State of..... Oregon..... I hereby certify that the within instrument was filed in this office

for record on the 15th day of November, 1982

Donald J. Keum..... *Betty L. Shatto*
(COUNTY OFFICIAL) (DEPUTY)

Form R6-7100-57 (9/71)

RECEIVED BY
 Umatilla County Surveyor
 Date _____
 Rec'd By _____
 No. 82-138-B