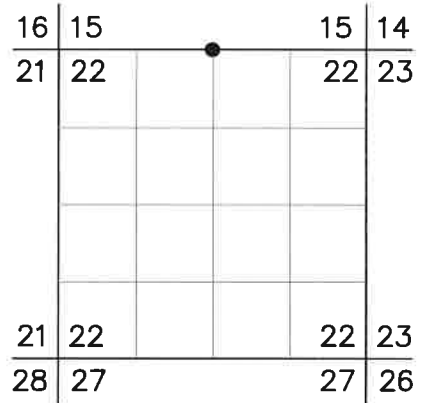


RECORD OF LAND CORNER MONUMENTATION

NORTH 1/4 CORNER SECTION 22, T. 3 S., R. 32 E., W.M.



ORIGINALLY ESTABLISHED BY: George S. Pershin, U.S. Deputy Surveyor

CONTRACT NUMBER: 430

CONTRACT DATE: March 23, 1882

ORIGINAL DESCRIPTION: Set a basalt stone 12 x 8 x 7 ins 8 ins in ground on S.W. slope for 1/4 sec. cor. marked 1/4 on N. face from which
 A Pine 44 ins. di. brs. N.52°W. 35 lks dist marked 1/4 S. B.T.
 A Pine 16 ins. di. brs. S.52°E. 38 lks dist marked 1/4 S. B.T.

EVIDENCE FOUND: After a diligent search, I found no remaining evidence of the original corner. The area has been subjected to significant disturbance from past logging activities. I found the remains of two ponderosa pine stumps near the record locations of the bearing trees, but there were no blazes or scribing present to substantiate either one as a bearing tree. I declare this corner lost, and reestablish it by single proportionate measurement between found monuments at the NE and NW corners of Section 22.

DESCRIPTION OF MONUMENTS AND ACCESSORIES SET AND METHODS USED:

At the corner point, I set a standard USFS 2½"x30" aluminum pipe with attached ¾" aluminum cap 26" in the ground. Built a 3 ft. diameter mound of stone around the monument to top of cap. Cap is marked as shown below.

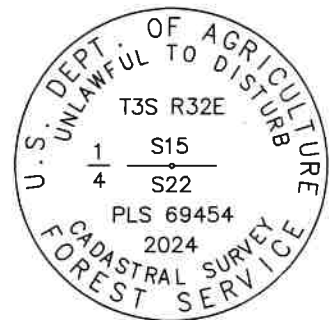
From which, **I SCRIBE NEW BEARING TREES:**

- ▶ A ponderosa pine, 7" dbh bears S.35°E., 21.24 ft. marked X in upper blaze and BT in lower blaze
- ▶ A ponderosa pine, 11" dbh bears S.35°W., 28.26 ft. marked 1/4 S22 in upper blaze and BT in lower blaze

Also from which, **I SET NEW REFERENCE POINTS:**

- ▶ A 5/8"x 24" iron pin bears N.50°20'E., 23.84 ft., with attached 2" aluminum cap marked RP 1 2024 PLS 69454
- ▶ A 5/8"x 24" iron pin bears N.30°13'W., 19.72 ft., with attached 2" aluminum cap marked RP 2 2024 PLS 69454

CORNER MONUMENT MARKED:



Placed a blue plastic-encased magnet at base of pipe. Painted a 6 inch red band around each bearing tree, and also painted blazes red and attached USFS 54-3 and 54-9 signs. Used RTK GPS to measure bearings. Distances to bearing trees measured with a steel tape, measuring to a Mag Spike driven in the side-center-right at the root crown of each tree, with an attached 1½" aluminum washer stamped PLS 69454. Bearings are geodetic, derived by GPS observation at the corner. Set an aluminum guard post east and alongside, with USFS signs 54-2 and 54-9 attached. Corner is located approximately 7 ft. northerly of an east-west running fence line.

RESTORATION BY, STAMP AND DATE:

Work completed June 25, 2024 by:

Jason L. Hatfield, PLS
 Vince L. Kelly, Survey Technician
 Spencer B. Jones, Survey Technician

USDA FOREST SERVICE
 NORTHEAST OREGON LAND ZONE
 1550 Dewey Avenue, Suite A
 Baker City, OR 97814
 (541) 523-1283



24-078-8