

Index

File No. Y-17

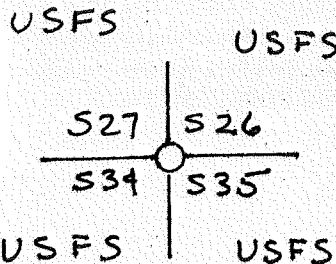
## CORNER RECORD (SEARCH)

(Ref. FSM 7151.4)

Tract or  
Survey No. \_\_\_\_\_Cor.  
No. 1771T 3 S R. 33 ER.D. LA GRANDE County UNION & UMATILLAMerid. WILLAMETTEN.F. WALLOWA-WHITMAN State OREGON

## CORNER DIAGRAM

## DESCRIBE CORNER MONUMENT FOUND



NONE

DESCRIBE BEARING TREES OR OTHER OFFICIAL ACCESSORIES FOUND <sup>2</sup>

A TRIPLE-PINE STUMP BEARS N40°E, 87.8 FT. B&amp;S S26 BT

## PHOTO IDENTIFICATION DATA

Photo No. \_\_\_\_\_

Filed At. \_\_\_\_\_

Object Ident. \_\_\_\_\_

Ident. By \_\_\_\_\_

Signature <sup>7</sup>DESCRIBE CORNER LOCATION RELATIVE TO NEAR-BY FEATURES, ALSO HOW TO REACH CORNER <sup>3</sup>

FROM 2110-220, 2110-250 3/4 OF A MILE TO END OF ROAD. CROSS CLEAR CUT THROUGH FRINGE OF TREES TO EAST-WEST CLEARING. FOLLOW CLEARING WEST TO WHERE CLEARING TURNS SOUTH. CORNER IS DOWNHILL 100 FT. ON THE FRINGE OF THE TREES.

## PLANE COORDINATE POSITION DATA

State \_\_\_\_\_ Zone \_\_\_\_\_

X \_\_\_\_\_

Y \_\_\_\_\_

Estab. By \_\_\_\_\_

Agency <sup>8</sup>Signature BT SectionTitle LS 1848 Division

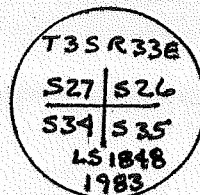
Headquarters

Date 11-83 FS-7100-52 (3/68) <sup>4</sup>

CORNER RECORD (PERPETUATION)

MONUMENT: DESCRIBE NEW MONUMENT SET, OR WORK DONE TO PRESERVE EXISTING MONUMENT

SET 3 1/2" ALUMINUM CAP ON 2 1/2" X 30' ALUMINUM PIPE  
 RISING 14" IN MOUND, MARKED:



ACCESSORIES: DESCRIBE NEW BT'S WITNESS OBJECTS ETC. ESTABLISHED, OR WORK DONE TO PRESERVE EXISTING EVIDENCE

- A 6 1/2" D.F. BEARS N69 3/4° E, 31.5 FT. B&S T3SR33E S26 BT
- A 6" D.F. BEARS S71° W, 23.6 FT. B&S T3SR33E S34 BT
- A 8" D.F. BEARS N65 1/2° W, 18.4 FT. B&S T3SR33E S27 BT
- A 1 1/2" D.F. BEARS S71 1/2° E, 4.7 FT. B&S T3SR33E S35 BT

10

Work Done By B.A. SUTTON Title SURVEYOR Date 11-83 State Registration No. or Agency LS 1848

Certified Cor. Record Prepared? Yes  No  Filed At: UNION CO. SURVEYOR'S OFFICE Date

11

REMARKS

12

Index File No. V-17 T.3S R.33E W.M.

Tract or Surv. No.

Cor. 1771

13

USDA-FOREST SERVICE

Index File No. V-17

CORNER RECORD (SEARCH)

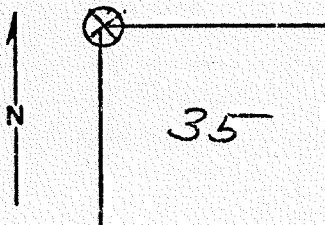
(Ref. FSM 7151.4)

Tract or Survey No. \_\_\_\_\_ Cor. No. \_\_\_\_\_

T 35 R. 33 E R.D. LaGrande County Union and Wmatilla Counties

Merid Willamette N.F. Willamette-Whitman State Oregon

CORNER DIAGRAM



DESCRIBE CORNER MONUMENT FOUND

*None found*

DESCRIBE BEARING TREES OR OTHER OFFICIAL ACCESSORIES FOUND

*P. Pine B.T. which is a fork of a forked pine. B.T. is dead with scribe visible*

PHOTO IDENTIFICATION DATA

Photo No. \_\_\_\_\_  
 Filed At. \_\_\_\_\_  
 Object Ident. \_\_\_\_\_  
 Ident. By \_\_\_\_\_

*Signature*

PLANE COORDINATE POSITION DATA

State \_\_\_\_\_ Zone \_\_\_\_\_  
 X \_\_\_\_\_  
 Y \_\_\_\_\_  
 Estab. By \_\_\_\_\_

*Agency*

Signature	Title	Division	Headquarters	Date	7100-52 (3.68)
<i>William Mealey</i>	<i>CET</i>		<i>LaGrande</i>	<i>10-22-82</i>	