

OREGON CORNER RESTORATION FORM

SECTION 1 TOWNSHIP 4 NORTH RANGE 27 EAST C-25
 COUNTY : UMATILLA DATE 10-2002

CORNER DESIGNATION

E 1/4

- CONDITION REPORT ONLY
- NOT FOUND
- RENEWED
- UNCOVERED
- SURVEYED IN
- REFERENCED

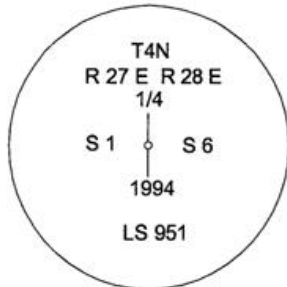
PREVIOUS RENEWALS / SURVEYS, ETC.

ORIGINAL SURVEY BY HAFT IN 1860, CONTRACT #93.
 DEPENDENT RESURVEY BY GOULD IN 1941.
 IN 1994 EDWARDS SET 2 3/8" BRASS CAP BY RETRACING GOULD'S SURVEY.

MONUMENTS AND ACCESSORIES FOUND: CONDITION AND SOURCE

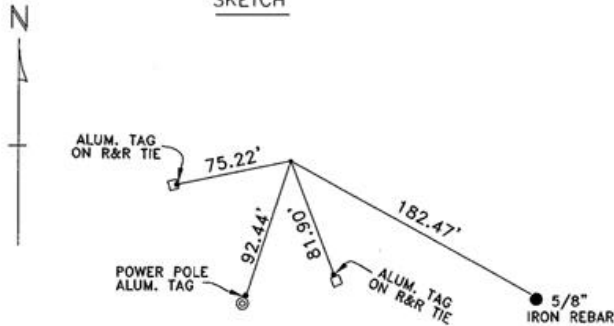
FOUND 2 3/8" BRASS CAP STAMPED AS BELOW. SEE MY SURVEY COUNTY # 94-022-C.
 AN ALUMINUM TAG #951 ON R&R TIE BEARS S 78°22'50" W 75.22 FEET.
 AN ALUMINUM TAG ON A POWER POLE BEARS S 18°26'40" W 92.44 FEET.
 AN ALUMINUM TAG #951 ON R&R TIE BEARS S 21°38'20" E 81.90 FEET.

MONUMENT DETAIL



NAD 83/91
 OREGON STATE PLANE
 INTERNATIONAL FEET
 800700.8068
 8489425.5303

SKETCH



MONUMENT SET (PROCEDURES AND DESCRIPTION)

NA

NEW ACCESSORIES FROM WHICH

A 5/8"x30" IRON REBAR WITH PLASTIC CAP #951 BEARS S 61° E 182.47 FEET.

LOCATION AND COMMENTS

FROM WESTERLY END OF BRIDGE ROAD, CROSS I-82 TO FRONTAGE ROAD AND FOLLOW FRONTAGE ROAD NORTHEASTERLY TO THE RANGE LINE. THEN GO NORTH ALONG GRAVEL ROAD .85 MILES TO THE 1/4 CORNER.

COMPASS DEC.

FIRM/AGENCY
 EDWARDS SURVEYING
 P.O. BOX 763
 HERMISTON, OREGON 97838

PARTY CHIEF
 CURTIS FAVOREL
 NOTES

WITNESS
 RICK SMITH

SURVEYOR'S SEAL

REGISTERED
 PROFESSIONAL
 LAND SURVEYOR

G. Dennis Edwards

OREGON
 JULY 16, 1971
 G. DENNIS EDWARDS
 9 5 1

RENEWS 12/31/2003

03-50-g 02-50-a