

OREGON CORNER RESTORATION FORM

SECTION 6 TOWNSHIP 4 N RANGE 28 E CORNER LOCATION CODE C-1

COUNTY: UMATILLA DATE: March 1994

CORNER DESIGNATION

WEST 1/4 CORNER.

CONDITION REPORT ONLY

NOT FOUND

RENEWED

UNRECORDED

X SURVEYED IN

X REFERENCED OUT

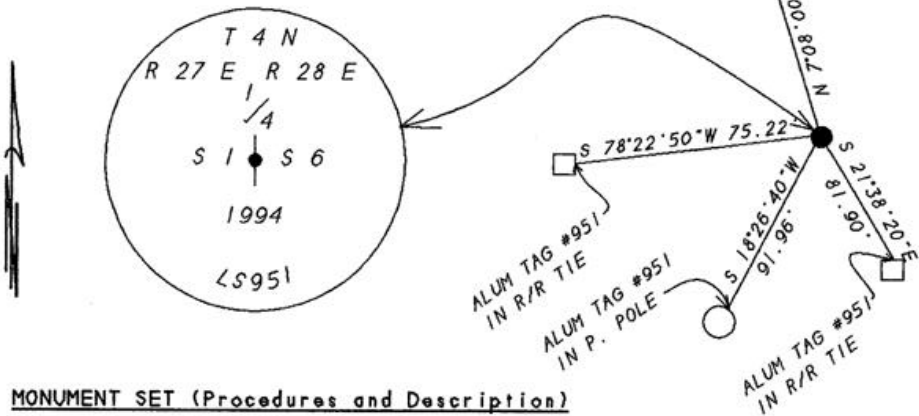
PREVIOUS RENEWALS/SURVEYS, ETC.

ORIGINAL SURVEY BY HAFT IN 1860. CONTRACT NO. 93.
DEPENDANT RESURVEY BY GOULD IN 1941.
THIS SURVEY COUNTY NO. 94-022-C. EDWARDS FOR OREGON DOT.

MONUMENTS & ACCESSORIES FOUND: Condition and Source

NO MONUMENTS FOUND.

MONUMENT DETAIL



MONUMENT SET (Procedures and Description)

I RETRACED GOULD'S 1941 SURVEY AND SET A 1" X 30" IRON PIPE WITH A 2 3/8" BRASS CAP STAMPED AS ABOVE AND 0.1' ABOVE SURFACE OF GROUND.
SEE MY SURVEY COUNTY NO. 94-022-C.

NEW ACCESSORIES

ALUM. TAG #951 IN A POWER POLE BEARS N 7°08'00" W 236.08 FEET.
ALUM. TAG #951 IN A POWER POLE BEARS S 18°26'40" W 91.96 FEET.
ALUM. TAG #951 IN A R/R TIE BEARS S 78°22'50" W 75.22 FEET.
ALUM. TAG #951 IN A R/R TIE BEARS S 21°38'20" E 81.90 FEET.

LOCATION & COMMENTS

FROM WESTERLY END OF BRIDGE ROAD CROSS I-82 TO FRONTAGE ROAD AND FOLLOW FRONTAGE ROAD NORTH-EASTERLY TO THE RANGE LINE. THEN GO NORTH 0.85 MILES ALONG GRAVEL ROAD TO 1/4 CORNER.

COMPASS DEC _____
FIRM EDWARDS SURVEYING
P.O. BOX 763
HERMISTON, OR. 97838
PARTY CHIEF D. EDWARDS
NOTES J. COPPOCK
WITNESS J. COPPOCK

SURVEYOR'S SEAL

REGISTERED PROFESSIONAL LAND SURVEYOR

G. Dennis Edwards

OREGON
JULY 16, 1971
G. DENNIS EDWARDS
951

RENEWS 12/31/95

RECEIVED BY

Umatilla County Surveyor

Date 1-95

Rec'd By KK

No. 96-12-R