

OREGON CORNER RESTORATION FORM

SECTION 12 TOWNSHIP 4 NORTH RANGE 27 EAST

J-23

COUNTY : UMATILLA DATE 12/02

CORNER DESIGNATION

S 1/4 CORNER

CONDITION REPORT ONLY

NOT FOUND

RENEWED

UNCOVERED

SURVEYED IN

REFERENCED

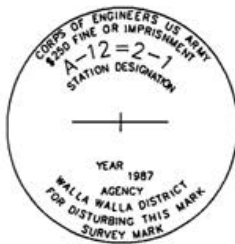
PREVIOUS RENEWALS / SURVEYS, ETC.

ORIGINALLY SURVEYED UNDER CONTRACT #209 IN 1874 BY WALDEN.
CORPS OF ENGINEERS 1987

MONUMENTS AND ACCESSORIES FOUND: CONDITION AND SOURCE

A 3 1/2" ALUMINUM CAP.

MONUMENT DETAIL

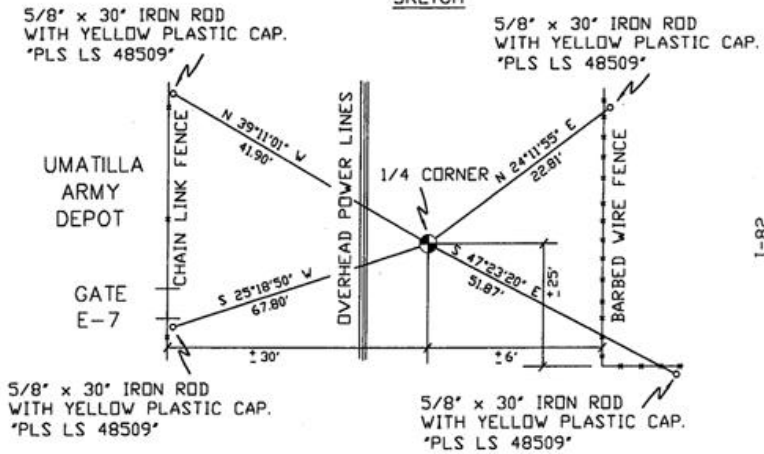


NAD 83/91
OREGON STATE PLANE
INTERNATIONAL FEET

792715.3626
8486846.3454

N.T.S

SKETCH



I-82

MONUMENT SET (PROCEDURES AND DESCRIPTION)

NEW ACCESSORIES FROM WHICH

- A 5/8" x 30" IRON ROD WITH A YELLOW PLASTIC CAP MKD "PLS LS 48509" LIES N 24°11'55" E, 22.81 FEET.
- A 5/8" x 30" IRON ROD WITH A YELLOW PLASTIC CAP MKD "PLS LS 48509" LIES S 47°23'20" E, 51.87 FEET.
- A 5/8" x 30" IRON ROD WITH A YELLOW PLASTIC CAP MKD "PLS LS 48509" LIES S 25°18'50" W, 67.80 FEET.
- A 5/8" x 30" IRON ROD WITH A YELLOW PLASTIC CAP MKD "PLS LS 48509" LIES N 39°11'01" W, 41.90 FEET.

LOCATION AND COMMENTS

FROM INTERSECTION OF BRIDGE
ROAD WITH WALKER ROAD
GO WEST 1/2 MILE TO
CORNER.

COMPASS DEC.

FIRM/AGENCY

PRIMM LAND SURVEYING
P.O. BOX 1322
HERMISTON, OREGON 97838

PARTY CHIEF

KEITH P. PRIMM

NOTES

WITNESS

BRIT L. PRIMM

SURVEYOR'S SEAL

REGISTERED
PROFESSIONAL
LAND SURVEYOR

Brit L. Primm
OREGON
JULY 13, 1999
BRIT L. PRIMM
48509

EXPIRATION DATE: 12/31/04

03-49-9