

# OREGON CORNER RESTORATION FORM

SECTION 25 TOWNSHIP 4 NORTH RANGE 27 EAST

T-21

COUNTY : UMATILLA DATE 12/02

CORNER DESIGNATION

W 1/4 CORNER

CONDITION REPORT ONLY

NOT FOUND

RENEWED

UNCOVERED

SURVEYED IN

REFERENCED

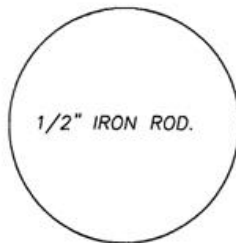
PREVIOUS RENEWALS / SURVEYS, ETC.

ORIGINALLY SURVEYED UNDER CONTRACT #209 IN 1874 BY WALDEN.  
STAEBLER 1981, CS #S-141.

MONUMENTS AND ACCESSORIES FOUND: CONDITION AND SOURCE

A 1/2" IRON ROD.

MONUMENT DETAIL

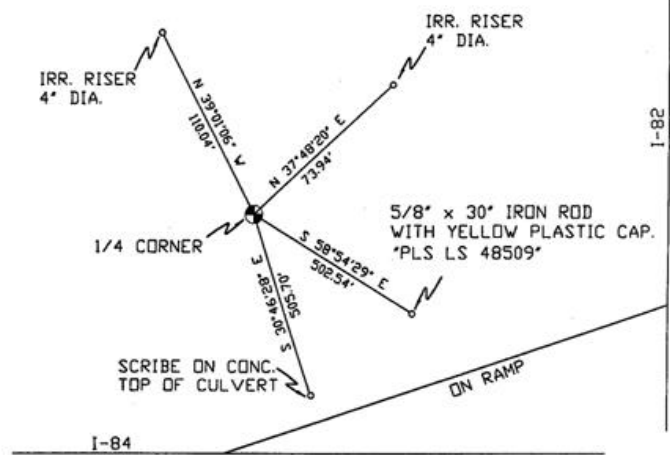


NAD 83/91  
OREGON STATE PLANE  
INTERNATIONAL FEET

779449.0889  
8484372.8615



SKETCH



MONUMENT SET ( PROCEDURES AND DESCRIPTION )

NEW ACCESSORIES FROM WHICH

- A 4" IRRIGATION RISER LIES N 37°48'20" E, 73.94 FEET.
- A 5/8" x 30" IRON ROD WITH A YELLOW PLASTIC CAP MKD "PLS LS 48509" LIES S 58°54'29" E, 502.54 FEET.
- A SCRIBE IN CONCRETE TOP OF CULVERT LIES S 30°46'28" E, 505.70 FEET.
- A 4" IRRIGATION RISER LIES N 39°01'06" W, 110.04 FEET.

LOCATION AND COMMENTS

FROM THE INTERSECTION OF  
LAMB RD. OVERPASS WITH I 82  
FOLLOW I 82 ON RAMP 0.8 MI.  
ONTO I 84 ON RAMP TURN  
NORTHWEST OFF OF I 84 RAMP  
FOLLOW SOUTHWEST-NORTHEAST  
FENCE LINE +/- 200 FEET TO AN  
ANGLE POINT IN SAID FENCE  
AND A CULVERT UNDER I 84 RAMP  
CORNER FALLS N 30° W  
+/- 505 FEET FROM SAID  
CULVERT.

COMPASS DEC.

FIRM/AGENCY  
PRIMM LAND SURVEYING  
P.O. BOX 1322  
HERMISTON, OREGON 97838

PARTY CHIEF  
KEITH P. PRIMM

NOTES

WITNESS  
BRIT L. PRIMM

SURVEYOR'S SEAL

REGISTERED  
PROFESSIONAL  
LAND SURVEYOR

*BP/PR*  
OREGON  
JULY 13, 1999  
BRIT L. PRIMM  
48509

EXPIRATION DATE: 12/31/04

03-49-g