

OREGON CORNER RESTORATION FORM

SECTION 27 TOWNSHIP 4 NORTH RANGE 27 EAST

V-15

COUNTY : UMATILLA DATE 12/02

CORNER DESIGNATION

S 1/4 CORNER

CONDITION REPORT ONLY

NOT FOUND

RENEWED

UNCOVERED

SURVEYED IN

REFERENCED

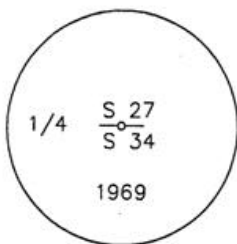
PREVIOUS RENEWALS / SURVEYS, ETC.

ORIGINALLY SURVEYED UNDER CONTRACT #209 IN 1874 BY WALDEN.
THOMPSON 1969 SURVEY FOR HANSELL.

MONUMENTS AND ACCESSORIES FOUND: CONDITION AND SOURCE

A 2 1/2" BRASS CAP.

MONUMENT DETAIL



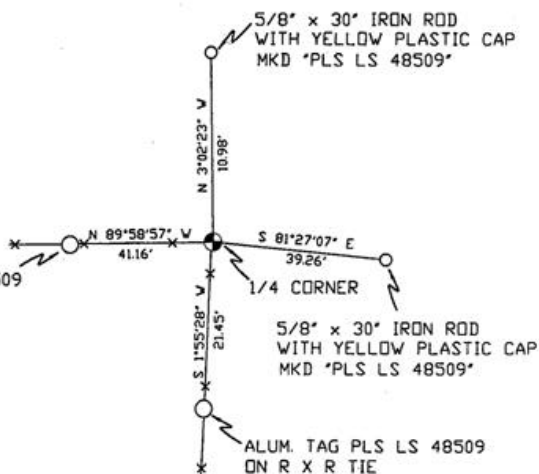
NAD 83/91
OREGON STATE PLANE
INTERNATIONAL FEET

776701.1108
8476405.8971



ALUM. TAG PLS LS 48509
ON FENCE POST

SKETCH



MONUMENT SET (PROCEDURES AND DESCRIPTION)

NEW ACCESSORIES FROM WHICH

AN ALUMINUM TAG "PLS LS 48509" ON A FENCE POST LIES N 89°58'57" W, 41.16 FEET.
AN ALUMINUM TAG "PLS LS 48509" ON A R x R TIE LIES S 1°55'28" W, 21.45 FEET.
A 5/8" x 30" IRON ROD WITH A YELLOW PLASTIC CAP MKD "PLS LS 48509" LIES S 81°27'07" E, 39.26 FEET.
A 5/8" x 30" IRON ROD WITH A YELLOW PLASTIC CAP MKD "PLS LS 48509" LIES N 3°02'23" W, 10.98 FEET.

LOCATION AND COMMENTS

FROM INTERSECTION OF COUNTY
LINE RD. AND FRONTAGE RD. GO
SOUTH 0.7 MILES THEN EAST
0.5 MILES TO CORNER.

COMPASS DEC.

FIRM/AGENCY
PRIMM LAND SURVEYING
P.O. BOX 1322
HERMISTON, OREGON 97838

PARTY CHIEF
KEITH P. PRIMM

NOTES

WITNESS
BRIT L. PRIMM

SURVEYOR'S SEAL

REGISTERED
PROFESSIONAL
LAND SURVEYOR

Brit L. Primm
OREGON
JULY 13, 1999
BRIT L. PRIMM
48509

EXPIRATION DATE: 12/31/04

03-49-9