

# OREGON CORNER RESTORATION FORM

SECTION 27 TOWNSHIP 4 NORTH RANGE 27 EAST

V-17

COUNTY : UMATILLA DATE 12/02

CORNER DESIGNATION

SE CORNER

CONDITION REPORT ONLY

NOT FOUND

RENEWED

UNCOVERED

SURVEYED IN

REFERENCED

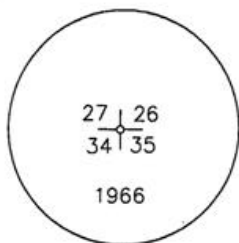
PREVIOUS RENEWALS / SURVEYS, ETC.

ORIGINALLY SURVEYED UNDER CONTRACT #209 IN 1874 BY WALDEN.  
HARRIS 1966 SURVEY FOR UMATILLA COUNTY CS. #C-20-B.

MONUMENTS AND ACCESSORIES FOUND: CONDITION AND SOURCE

A 2 1/2" BRASS CAP.

MONUMENT DETAIL

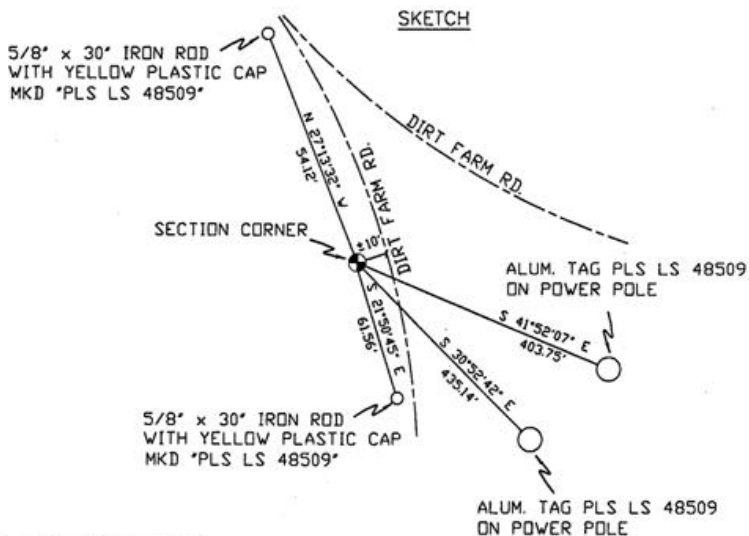


NAD 83/91  
OREGON STATE PLANE  
INTERNATIONAL FEET

776737.9330  
8479062.3464

MONUMENT SET ( PROCEDURES AND DESCRIPTION )

SKETCH



NEW ACCESSORIES FROM WHICH

A 5/8" x 30" IRON ROD WITH A YELLOW PLASTIC CAP MKD "PLS LS 48509" LIES N 27°13'32" W, 54.12 FEET.  
A 5/8" x 30" IRON ROD WITH A YELLOW PLASTIC CAP MKD "PLS LS 48509" LIES S 21°50'45" E, 61.56 FEET.  
AN ALUMINUM TAG "PLS LS 48509" ON A POWER POLE LIES S 30°52'42" E, 435.14 FEET.  
AN ALUMINUM TAG "PLS LS 48509" ON A POWER POLE LIES S 41°52'07" E, 403.75 FEET.

LOCATION AND COMMENTS

FROM THE WATER TOWER AT THE  
SOUTHEAST CORNER OF THE OLD  
TOWNSITE OF ORDANCE ON THE  
SOUTH SIDE OF I 84 GO SOUTH  
ALONG DIRT FARM ROAD 0.25 MI.  
TO CORNER, CORNER FALLS  
+/- 300 FT WEST OF THE NORTH  
END OF A NORTH-SOUTH POWER LINE.

COMPASS DEC.

FIRM/AGENCY  
PRIMM LAND SURVEYING  
P.O. BOX 1322  
HERMISTON, OREGON 97838

PARTY CHIEF  
KEITH P. PRIMM

NOTES

WITNESS  
BRIT L. PRIMM

SURVEYOR'S SEAL

REGISTERED  
PROFESSIONAL  
LAND SURVEYOR

*Brit L. Primm*  
OREGON  
JULY 13, 1999  
BRIT L. PRIMM  
48509

EXPIRATION DATE: 12/31/04

08-49-9