

OREGON CORNER RESTORATION FORM

SECTION 26 TOWNSHIP 4 NORTH RANGE 27 EAST

V-19

COUNTY : UMATILLA DATE 12/02

CORNER DESIGNATION

S 1/4 CORNER

CONDITION REPORT ONLY

NOT FOUND

RENEWED

UNCOVERED

SURVEYED IN

REFERENCED

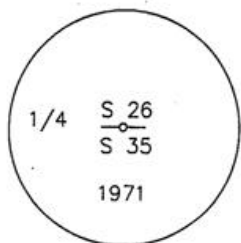
PREVIOUS RENEWALS / SURVEYS, ETC.

ORIGINALLY SURVEYED UNDER CONTRACT #209 IN 1874 BY WALDEN.
THOMPSON 1971, CS #H-38.

MONUMENTS AND ACCESSORIES FOUND: CONDITION AND SOURCE

A 2 1/2" BRASS CAP.

MONUMENT DETAIL

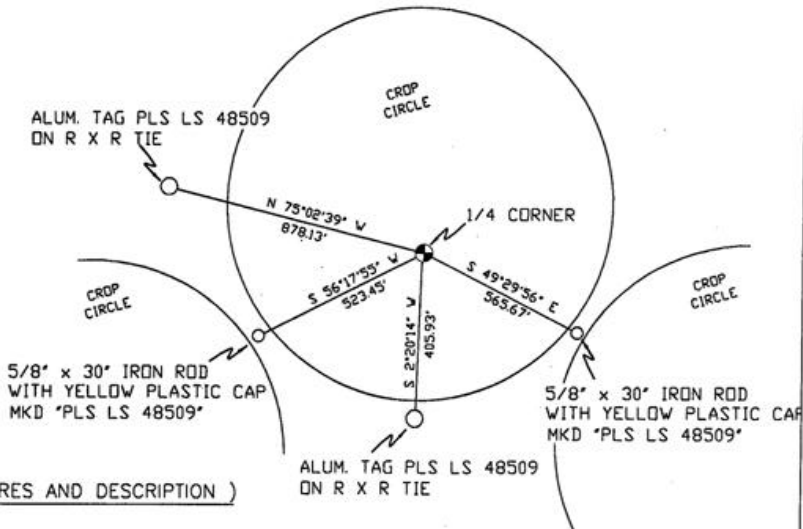


NAD 83/91
OREGON STATE PLANE
INTERNATIONAL FEET

776769.0340
8481732.0917



SKETCH



MONUMENT SET (PROCEDURES AND DESCRIPTION)

NEW ACCESSORIES FROM WHICH

A 5/8" x 30" IRON ROD WITH A YELLOW PLASTIC CAP MKD "PLS LS 48509" LIES S 56°17'55" W, 523.45 FEET.
A 5/8" x 30" IRON ROD WITH A YELLOW PLASTIC CAP MKD "PLS LS 48509" LIES S 49°29'56" E, 565.67 FEET.
AN ALUMINUM TAG "PLS LS 48509" ON A R x R TIE LIES N 75°02'39" W, 878.13 FEET.
AN ALUMINUM TAG "PLS LS 48509" ON A R x R TIE LIES S 2°20'14" W, 405.93 FEET.

LOCATION AND COMMENTS

FROM THE INTERSECTION OF COL. JORDAN RD. AND STAFFORD HANSELL RD. GO WEST ALONG STAFFORD HANSELL RD. 1.0 MI. TO A GRAVEL RD SOUTH AND THEN SOUTH 0.15 MI. TO A DIRT FARM ROAD EAST-WEST, THEN WEST 0.5 MI. TO CORNER, CORNER FALLS OUT IN PIVOT CIRCLE.

COMPASS DEC.

FIRM/AGENCY
PRIMM LAND SURVEYING
P.O. BOX 1322
HERMISTON, OREGON 97838

PARTY CHIEF
KEITH P. PRIMM

NOTES

WITNESS
BRIT L. PRIMM

SURVEYOR'S SEAL

REGISTERED
PROFESSIONAL
LAND SURVEYOR

Brit L. Primm
OREGON
JULY 13, 1999
BRIT L. PRIMM
48509

EXPIRATION DATE: 12/31/04

03-49-9