

OREGON CORNER RESTORATION FORM

SECTION 26 TOWNSHIP 4 NORTH RANGE 27 EAST

V-21

COUNTY : UMATILLA DATE 12/02

CORNER DESIGNATION

SE CORNER

X CONDITION REPORT ONLY

- NOT FOUND
- RENEWED
- UNCOVERED
- SURVEYED IN
- REFERENCED

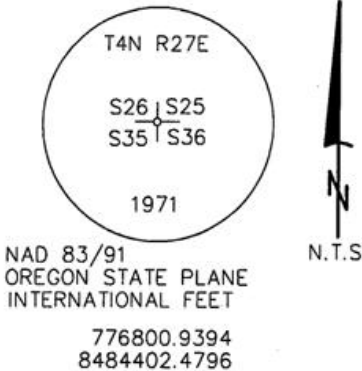
PREVIOUS RENEWALS / SURVEYS, ETC.

ORIGINALLY SURVEYED UNDER CONTRACT #209 IN 1874 BY WALDEN THOMPSON 1971, CS #H-38.

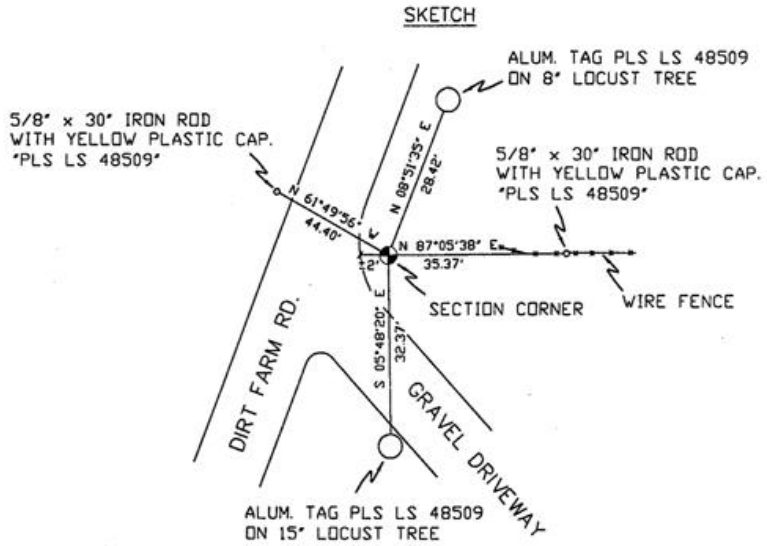
MONUMENTS AND ACCESSORIES FOUND: CONDITION AND SOURCE

A 2 1/2" BRASS CAP.

MONUMENT DETAIL



SKETCH



MONUMENT SET (PROCEDURES AND DESCRIPTION)

NEW ACCESSORIES FROM WHICH

- A 5/8" x 30" IRON ROD WITH A YELLOW PLASTIC CAP MKD "PLS LS 48509" LIES N 87°05'38" E, 35.37 FEET.
- AN ALUMINUM TAG "PLS LS 48509" ON A 8" LOCUST TREE LIES N 08°51'35" E, 28.42 FEET.
- AN ALUMINUM TAG "PLS LS 48509" ON A 15" LOCUST TREE LIES S 05°48'20" E, 32.37 FEET.
- A 5/8" x 30" IRON ROD WITH A YELLOW PLASTIC CAP MKD "PLS LS 48509" LIES N 61°49'56" W, 44.40 FEET.

LOCATION AND COMMENTS

FROM INTERSECTION OF COL. JORDAN RD. AND STAFFORD HANSELL RD. GO WEST ALONG STAFFORD RD. 1 MILE TO A GRAVEL RD. SOUTH AND THEN SOUTH 0.15 MILES TO CORNER, CORNER FALLS AT WEST END OF THE NORTHERLY CONC. CURB.

COMPASS DEC.

FIRM/AGENCY
PRIMM LAND SURVEYING
P.O. BOX 1322
HERMISTON, OREGON 97838

PARTY CHIEF
KEITH P. PRIMM

NOTES

WITNESS
BRIT L. PRIMM

SURVEYOR'S SEAL

REGISTERED
PROFESSIONAL
LAND SURVEYOR

Brit L. Primm
OREGON
JULY 13, 1999
BRIT L. PRIMM
48509

EXPIRATION DATE: 12/31/04

03-49-9