

OREGON CORNER RESTORATION FORM

SECTION 25 TOWNSHIP 4 NORTH RANGE 27 EAST
 COUNTY : UMATILLA DATE 12/02

V-23

CORNER DESIGNATION

S 1/4 CORNER

- CONDITION REPORT ONLY
- NOT FOUND
- RENEWED
- UNCOVERED
- SURVEYED IN
- REFERENCED

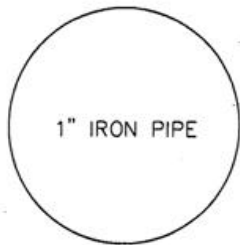
PREVIOUS RENEWALS / SURVEYS, ETC.

ORIGINALLY SURVEYED UNDER CONTRACT #209 IN 1874 BY WALDEN.
 POSSIBLY FROM PLAT OF MEADOW VALLEY +/- 1917.

MONUMENTS AND ACCESSORIES FOUND: CONDITION AND SOURCE

A 1" IRON PIPE

MONUMENT DETAIL

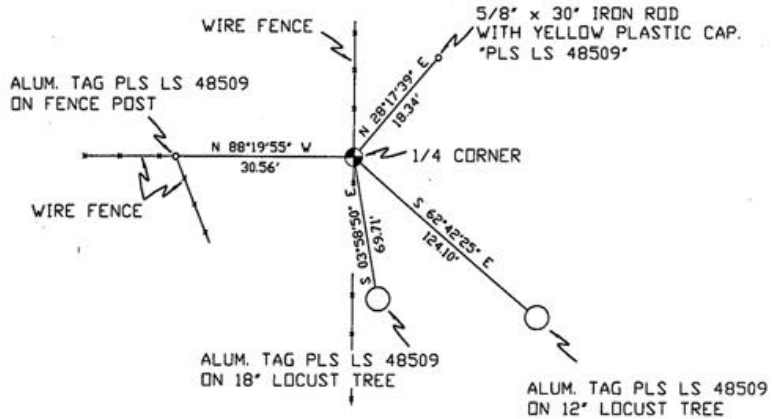


NAD 83/91
 OREGON STATE PLANE
 INTERNATIONAL FEET

776836.4394
 8487043.0963



SKETCH



MONUMENT SET (PROCEDURES AND DESCRIPTION)

NEW ACCESSORIES FROM WHICH

A 5/8" x 30" IRON ROD WITH A YELLOW PLASTIC CAP MKD "PLS LS 48509" LIES N 28°17'39" E, 18.34 FEET.
 AN ALUMINUM TAG "PLS LS 48509" ON A 12" LOCUST TREE LIES S 62°42'25" E, 124.10 FEET.
 AN ALUMINUM TAG "PLS LS 48509" ON A 18" LOCUST TREE LIES S 03°58'50" E, 69.71 FEET.
 AN ALUMINUM TAG "PLS LS 48509" ON A FENCE POST LIES N 88°19'55" W, 30.56 FEET.

LOCATION AND COMMENTS

FROM INTERSECTION OF COL. JORDAN RD. AND STAFFORD HANSELL RD. GO WEST ALONG STAFFORD HANSELL RD. 0.5 MI. AND THEN SOUTH +/- 200 FEET ALONG NORTH-SOUTH FENCE LINE TO CORNER.

COMPASS DEC.

FIRM/AGENCY
 PRIMM LAND SURVEYING
 P.O. BOX 1322
 HERMISTON, OREGON 97838

PARTY CHIEF
 KEITH P. PRIMM

NOTES

WITNESS
 BRIT L. PRIMM

SURVEYOR'S SEAL

REGISTERED
 PROFESSIONAL
 LAND SURVEYOR

Brit L. Primm

OREGON
 JULY 13, 1999
 BRIT L. PRIMM
 48509

EXPIRATION DATE: 12/31/04

03-49-9