

OREGON CORNER RESTORATION FORM

Section 2 Township 3N Range 27E
 County Umatilla Date: 06-14-02

Corner Designation: 3N27A17

Condition Report Only
 Not Found
 Remonumented
 Unrecorded
 Surveyed In
 Referenced Out

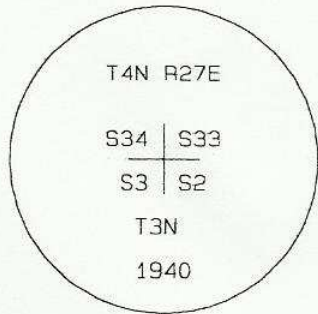
Previous Renewals / Surveys, etc.

Corner set by GLO in 1940.
 Survey 99-176-B reports finding this monument.

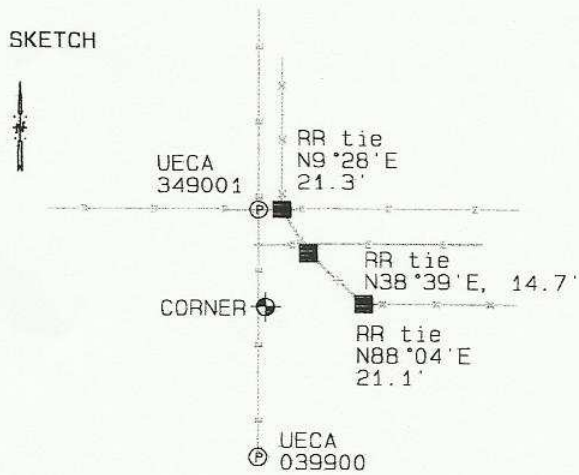
Monument and Accessories Found: (condition and source)

Found the record monument in good condition 12 inches below the surface, stamped as shown in the diagram below.

DIAGRAM



SKETCH



MONUMENT (S) AND ACCESSORIES SET (Procedures and Description)

None.

REFERENCES SET:

None.

Made GPS tie to TRI Station
 Stanfield East Base.
 Latitude 45°46'39.18159"N
 Longitude 119°24'50.69264"W
 NAD 83(1991)

Oregon State Plane Coord. - North Zone
 Northing 771449.58
 Easting 8479162.16
 Ortho Height 565.56
 Ellipsoidal Height 495.61

Location and Comments

Compass Declination
 20°E

Surveyors Seal

From the junction of County Line Road
 and Key Road, follow the fence east
 1.0 mile to the corner.

REGISTERED
 PROFESSIONAL
 LAND SURVEYOR

RECEIVED BY:

Firm / Agency

David L. Haddock

Date: 7-02
 Rec'd By: KE
 No. 02-184-g

Haddock Surveying
 P. O. Box 1574
 Pendleton, OR 97801
 (541) 276-2174

OREGON
 JULY 12, 1968
 DAVID L. HADDOCK
 852

RENEWS 6-30-03