

OREGON CORNER RESTORATION FORM

SECTION 5 TOWNSHIP 4N RANGE 28E CORNER LOCATION CODE A-7

COUNTY: UMATILLA DATE: March 1994

CORNER DESIGNATION

N 1/4 SECTION 5. T4N. R28E. W.M..

- CONDITION REPORT ONLY
- NOT FOUND
- RENEWED
- UNRECORDED
- SURVEYED IN
- REFERENCED OUT

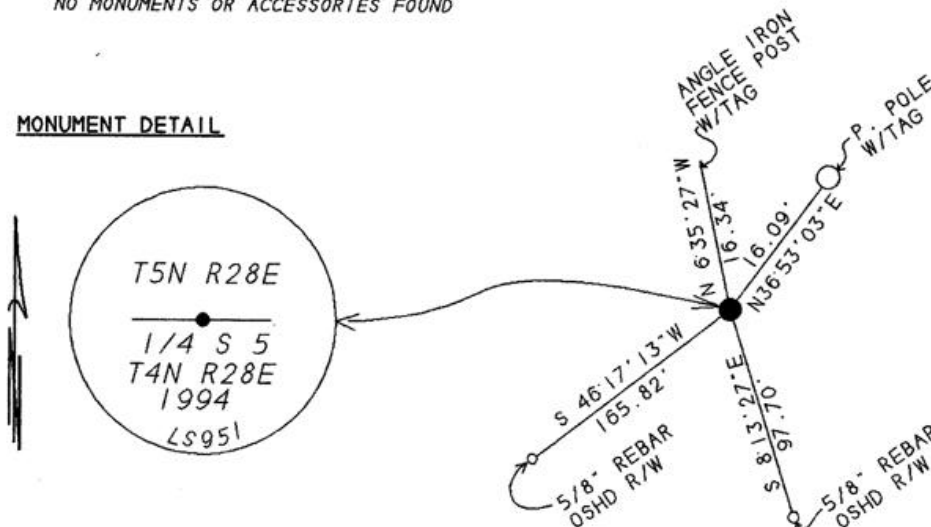
PREVIOUS RENEWALS/SURVEYS, ETC.

ORIGINAL SURVEY BY HAFT IN 1860. CONTRACT NO. 93.
DEPENDENT RESURVEY BY GOULD IN 1941.
SURVEY BY UMATILLA COUNTY SURVEYOR (D. KRUMBEIN) IN 1980
THIS SURVEY COUNTY NO. 94-022-C. EDWARDS FOR OREGON DOT..

MONUMENTS & ACCESSORIES FOUND: Condition and Source

NO MONUMENTS OR ACCESSORIES FOUND

MONUMENT DETAIL



MONUMENT SET (Procedures and Description)

BY SINGLE PROPORTION (SEE MY SURVEY COUNTY NO. 94-022-C 0
I SET A 1"X24" IRON PIPE WITH A 2 3/8" BRASS CAP STAMPED AS ABOVE
AT THE SURFACE OF ASPHALT RAMP.

NEW ACCESSORIES

STATE HWY ROW ANGLE IRON FENCE POST BEARS N 06°35'27"W 16.34 FEET.
ALUM. TAG #951 IN P. POLE BEARS N 36°53'03"E 16.09 FEET.
OR. STATE R/W 5/8" REBAR, STA. 44+19.44 70' LT. BEARS S 8°13'27"E 97.70 FEET.
OR. STATE R/W 5/8" REBAR, STA. 44+19.44 65' RT. BEARS S 46°17'13"W 165.82 FEET.

LOCATION & COMMENTS

LOCATED 50 FEET + EAST OF
THE INTERSECTION OF WALKER
ROAD, AND POWER LINE ROAD.
JUST SOUTH OF I-82.

COMPASS DEC _____
 FIRM EDWARDS SURVEYING
P.O. BOX 763
HERMISTON, OR. 97838
 PARTY CHIEF D. EDWARDS
 NOTES J. COPPOCK
 WITNESS J. COPPOCK

SURVEYOR'S SEAL

REGISTERED
PROFESSIONAL
LAND SURVEYOR

G. Dennis Edwards

OREGON
JULY 16, 1971
G. DENNIS EDWARDS
951

RENEWS 12/31/95

RECEIVED BY
 Umatilla County Surveyor
 Date 1-96
 Rec'd By JK
 No. 96-R-R