

OREGON CORNER RESTORATION FORM

SECTION 7 TOWNSHIP 4 N RANGE 28 E CORNER LOCATION CODE G-1

COUNTY: UMATILLA DATE: 6/92

CORNER DESIGNATION
WEST 1/4 CORNER

CONDITION REPORT ONLY
 NOT FOUND
 RENEWED
 UNRECORDED
 SURVEYED IN
 REFERENCED OUT

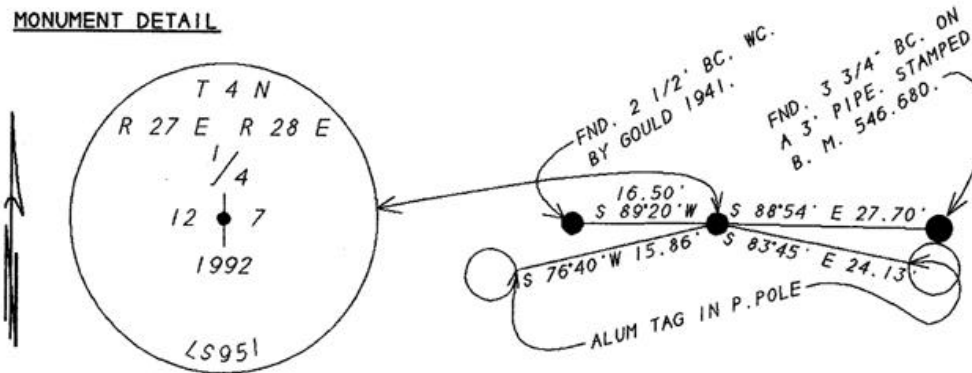
PREVIOUS RENEWALS/SURVEYS, ETC.

ORIGINAL SURVEY BY HAFT IN 1860.
DEPENDENT RESURVEY BY GOULD IN 1941.
THIS SURVEY: PARTITION PLAT NO. 1992-29.

MONUMENTS & ACCESSORIES FOUND: Condition and Source

FOUND 2 1/2" BRASS CAP W.C. (25 LKS.) 16.5 FEET WEST, SET BY GOULD IN 1941.

MONUMENT DETAIL



MONUMENT SET (Procedures and Description)

16.50 FEET EAST OF GOULD'S BC. WITNESS CORNER 1
SET A 1" X 30" GALVANIZED PIPE WITH A 2 3/8" BRASS
CAP 0.2' BELOW THE SURFACE OF GRAVEL ROAD STAMPED
AS ABOVE.

NEW ACCESSORIES

A 2 1/2" BC.WC. BY GOULD 1941 BEARS S 89°20'W 16.50 FEET. (25 LINKS)
A 3 3/4" BC.BM. EL.546.680 BEARS S 88°54'E 27.70 FEET.
AN ALUM. TAG #951 IN P.POLE BEARS S 76°40'W 15.80 FEET.
AN ALUM. TAG #951 IN P.POLE BEARS S 83°45'E 24.13 FEET.

LOCATION & COMMENTS

FROM THE INTERSECTION OF
BRIDGE ROAD AND WALKER
ROAD GO NORTH ALONG WALKER
ROAD ONE HALF MILE TO
CORNER.

COMPASS DEC _____
FIRM EDWARDS SURVEYING
P.O. BOX 763
HERMISTON, OR. 97838
PARTY CHIEF D. EDWARDS
NOTES J. COPPOCK
WITNESS J. COPPOCK

SURVEYOR'S SEAL

REGISTERED
PROFESSIONAL
LAND SURVEYOR

G. Dennis Edwards

OREGON
JULY 16, 1971
G. DENNIS EDWARDS
951

RENEWS 12/31/95

RECEIVED BY
Umatilla County Surveyor
Date 1-96
Rec'd By KK
No. 96-B-R