

OREGON CORNER RESTORATION FORM

Section 10 Township 4N Range 28E

J-13

County UMATILLA Date 11/95

CORNER DESIGNATION

SW Corner

- Condition Report Only
- Not Found
- Renewed
- Unrecorded
- Surveyed In
- Referenced Out

Previous Renewals/Surveys, etc. ORIG. SURVEYED IN 1860 By HAFT
Krumbein Set 2 1/2" B.C. in place of CONTRACT # 93
1 1/2" I. Pipe in 1980

Monument(s) & Accessories Found: (Condition and Source)

End Krumbeins 2 1/2" B.C. in Mon. Box

Monument Detail

Sketch



Monument Set (Procedures and Description)

After Krumbein's B.C. was dug out by pipeline construction
in its place I set 5/8" x 30" rebar with 2" Alum. Cap
stamped as above flush with the paved surface

SEE MY SURVEY FOR COLUCCIO

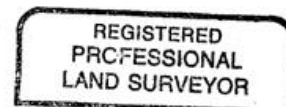
New Accessories

- a 1" x 30" I. Pipe with 2 3/8" B.C. Bears N 42° 03' 15" E 49.23 Ft.
- punch mk. in 1 1/2" Bolt in Base ^{Traffic} Signal Pole Bears N 36° 29' 11" E 51.55 Ft.
- punch mk. in " " " " " " " N 53° 26' 19" W 50.30 Ft.
- punch mk. in " " " " " " " S 30° 17' W 50.59 Ft.
- punch mk in " " " " " " " S 49° 42' 55" E 47.98 Ft.

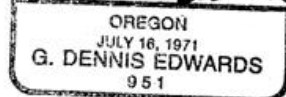
Location & Comments

At the intersection of Highland Ave. Compass Declination
E Butter Cr. Hwy (11th St) Firm/Agency EDWARDS
SURVEYING
Address P.O. Box 763
HERMISTON, OR 97038
Party Chief D. Edwards
Notes
Witness J. Coppock

Surveyor's Seal



G. Dennis Edwards



RENEWS 12/31/95

09-39-A