

# CORNER RESTORATION FORM

Township 4N Range 28E Section 11,12,13,14 County UMATILLA

State OREGON Date 5-22-2019 Number J-21

Corner Designation: 11,12,13,14

Previous Renewals ORIGINAL SOURCE OF CORNER

ORIGINALLY SURVEYED IN 1860 BY HAFT UNDER CONTRACT #93. HE SET POST IN

MOUND WITH TRENCH, MADE PITTS AND DEPOSITED A PINT OF CHARCOAL.

Accessories Found: \_\_\_\_\_

NONE.

Condition Report: Only

Not Found

Renewed

Surveyed In

Referenced

MONUMENT DETAIL

Found  Set

BASIS OF BEARINGS, NAD 83/91 OREGON STATE PLANE  
COORDINATES NORTH ZONE:

Northing: 792889.77  
Easting: 8515732.70



Monument & Accessories Set (Procedure and Description)

FOUND 2" ALUMINUM CAP MONUMENT FACE MARKED, I.S 951, AT AC GRADE, AS PER COUNTY SURVEY 95-148-A.

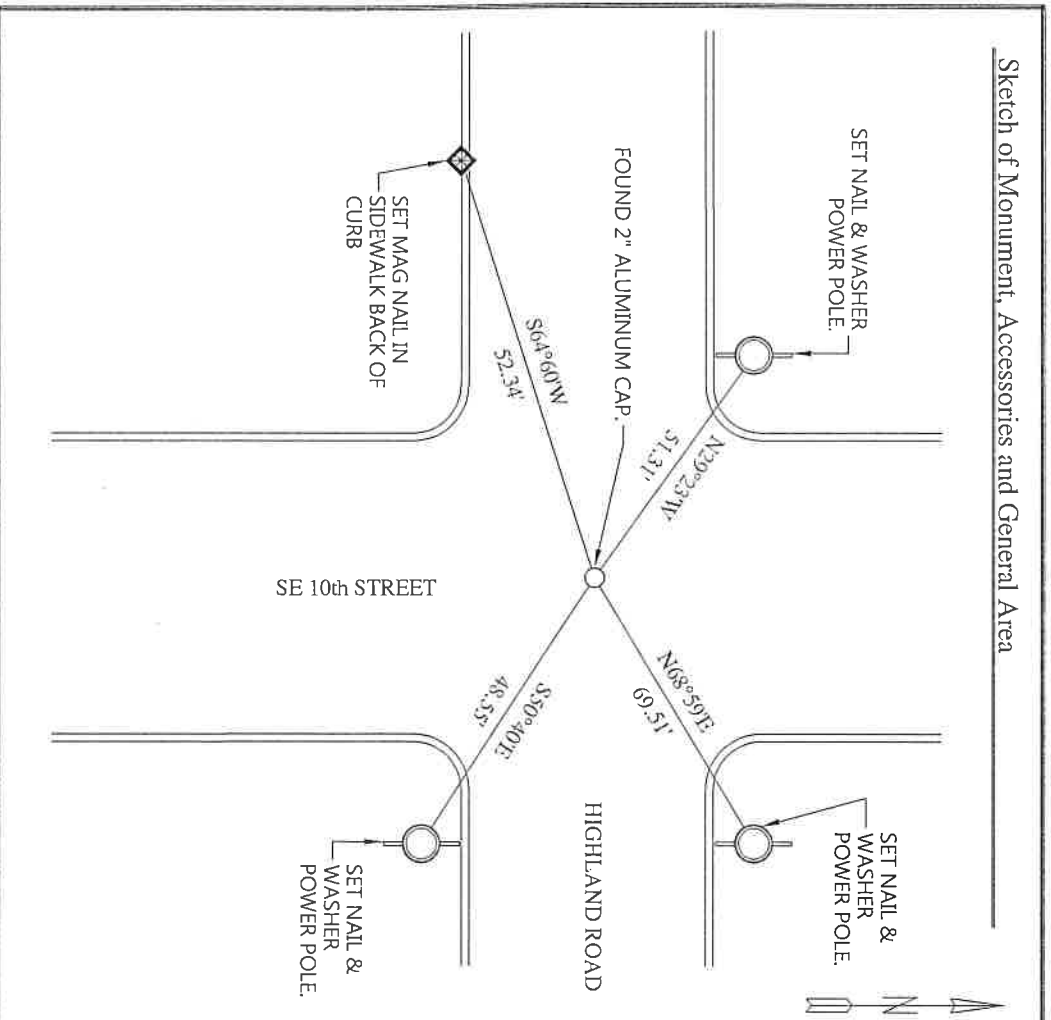
SET MAG NAIL IN SIDEWALK, BACK OF CURB, S64°60'W, 52.34 FT.

SET 1 1/2" STEEL WASHER MARKED 61420, IN POWER POLE W/MAG NAIL APPROX. 2' ABOVE GRADE, N29°23'W, 51.31 FT.

SET 1 1/2" STEEL WASHER MARKED 61420, IN POWER POLE W/MAG NAIL APPROX. 2' ABOVE GRADE, N68°59'E, 69.51 FT.

SET 1 1/2" STEEL WASHER MARKED 61420, IN POWER POLE W/MAG NAIL APPROX. 2' ABOVE GRADE, S50°40'E, 48.55 FT.

Sketch of Monument, Accessories and General Area



**REGISTERED  
PROFESSIONAL  
LAND SURVEYOR**

*Jane King*  
**OREGON**  
**MAY 10, 2011**  
**LANCE CLARK KING**  
**61420**

**RENEWS: 6/30/2021**

Agency: CK3, LLC  
945 W. ORCHARD  
HERMISTON OREGON 97838  
OFFICE: 541-567-2345  
FAX: 541-567-2305  
WEB: CK3LLC.NET  
Field Book # 0-325

**COUNTY SURVEYOR  
RECORDING INFO**

Received \_\_\_\_\_  
Filed \_\_\_\_\_  
Survey No. \_\_\_\_\_  
Drawing No. \_\_\_\_\_  
Index No. J-21

19-080-C